

## SFY 2013 WI T19 FFS Nursing Home Model

### Calculation of Medicaid Access Incentive

	NF	ICF/MR
1 Monthly Bed Assessment	\$ 170.00	\$ 910.00
2 Days per month	<u>30.4</u>	<u>30.4</u>
3 Daily Bed Assessment	\$ 5.59	\$ 29.93
4 Patients per Bed	<u>90.5%</u>	<u>90.5%</u>
5 Bed Assessment per Patient Day	\$ 6.18	\$ 33.08
6 Medicaid Patient Percentage	<u>64.0%</u>	<u>99.5%</u>
7 Bed Assessment per Medicaid Patient Day (=MAI)	<u>\$ 9.65</u>	<u>\$ 33.24</u>
	Prior Year MAI	\$ 30.69
	Change	\$ 2.55
	PDs	66,586
	Expend.	\$ 169,794

### Budgeted Amounts for Rate and Acuity Increases

	NF	ICF/MR
1 Rate increase supported by GPR/FED <i>% of base expenditures</i>	\$ - 0.0%	\$ 254,060 1.6%
2 Increase in patient liability (est.)	\$ 7,058,892 0.8%	\$ - 0.0%
3 Provision for Medicaid Access Incentive	\$ - 0.0%	\$ 169,794 1.1%
4 Provision for Acuity Increase (1% CMI Increase)	\$ 7,433,000 0.8%	\$ - 0.0%
Total	\$ 14,491,892 1.6%	\$ 423,855 2.7%

## Preliminary SFY 2013 WI T19 FFS Nursing Home Model Scenario Results

Scenario Description	Nursing Facilities				ICFs/MR			
	For-Profit	Tax-Exempt	Local Govt	Total	For-Profit	Tax-Exempt	Local Govt	Total
<b>T19 FFS PDs</b>	2,694,321	1,927,947	1,260,143	5,882,410	2,893	26,209	37,484	66,586
<b>Gross Expenditures (000's)</b>								
2 Scen 2: SFY13 Base Scenario using SFY12 avg rates & SFY12 avg T19 CMI's, with DHS budgeted PDs	413,802.4	300,224.1	185,655.0	899,681.6	474.1	6,098.2	8,902.6	15,474.9
3 Scen 3: Impute 2011 CRs and calculate rates for SFY13 using SFY12 formula and average SFY12 acuity	412,569.9	300,002.3	185,591.6	898,163.9	471.5	6,086.4	8,903.2	15,461.2
4 Scen 4: Apply 2011 R2 Cost Reports and Property Valuations	412,529.8	300,454.4	185,608.7	898,593.0	471.5	6,083.1	8,903.3	15,457.9
5 Scen 5: Estimate MDS 3.0 Basis for All-Res CMI in 2010 CR Period	415,451.5	300,926.2	185,742.8	902,120.4	471.5	6,093.9	8,903.3	15,468.8
6 Scen 6: ICF/MR MAI	415,451.5	300,926.2	185,742.8	902,120.4	478.9	6,159.6	8,998.9	15,637.4
7 Scen 7: Labor Factors	415,557.9	300,927.1	185,819.2	902,304.3	478.9	6,159.6	8,987.7	15,626.3
8 Scen 8: Property Incentive Estimates	415,557.9	300,927.1	185,819.2	902,304.3	478.9	6,159.6	8,987.7	15,626.3
9 Scen 9: Average SFY13 acuity (old ventilator CMI treatment and Behavior/CI add-on)	419,406.8	302,955.0	188,076.6	910,438.4	478.9	6,159.6	8,987.7	15,626.3
10 Scen 10: New ventilator CMI treatment	418,811.6	302,054.7	187,714.0	908,580.2	478.9	6,159.6	8,987.7	15,626.3
11 Scen 11: Proposed Behavior/CI add-on	418,906.3	302,066.8	187,630.4	908,603.4	478.9	6,159.6	8,983.7	15,622.2
12 Scen 12: Adjust DC Bases to Hit Expenditure Targets	420,791.4	304,266.6	189,099.1	914,157.1	480.9	6,251.0	9,162.6	15,894.5
13 Scen 13: Increase ventilator rate to \$550	421,083.4	304,686.3	189,208.6	914,978.3	480.9	6,251.0	9,162.6	15,894.5
14 Scen 14: Adjust DC Bases to Hit Expenditure Targets	420,815.7	304,373.4	189,000.3	914,189.4	480.9	6,251.0	9,162.6	15,894.5
<b>Cumulative Increase in Gross Expenditures from Base Scenario (000's)</b>								
3 Scen 3: Impute 2011 CRs and calculate rates for SFY13 using SFY12 formula and average SFY12 acuity	(1,232.5)	(221.8)	(63.4)	(1,517.7)	(2.6)	(11.8)	0.6	(13.8)
4 Scen 4: Apply 2011 R2 Cost Reports and Property Valuations	(1,272.6)	230.3	(46.3)	(1,088.6)	(2.6)	(15.2)	0.7	(17.0)
5 Scen 5: Estimate MDS 3.0 Basis for All-Res CMI in 2010 CR Period	1,649.0	702.0	87.7	2,438.8	(2.6)	(4.3)	0.7	(6.1)
6 Scen 6: ICF/MR MAI	1,649.0	702.0	87.7	2,438.8	4.8	61.4	96.3	162.5
7 Scen 7: Labor Factors	1,755.5	703.0	164.2	2,622.7	4.8	61.4	85.1	151.3
8 Scen 8: Property Incentive Estimates	1,755.5	703.0	164.2	2,622.7	4.8	61.4	85.1	151.3
9 Scen 9: Average SFY13 acuity (old ventilator CMI treatment and Behavior/CI add-on)	5,604.3	2,730.9	2,421.6	10,756.8	4.8	61.4	85.1	151.3
10 Scen 10: New ventilator CMI treatment	5,009.1	1,830.6	2,058.9	8,898.6	4.8	61.4	85.1	151.3
11 Scen 11: Proposed Behavior/CI add-on	5,103.8	1,842.6	1,975.3	8,921.8	4.8	61.4	81.1	147.3
12 Scen 12: Adjust DC Bases to Hit Expenditure Targets	6,989.0	4,042.4	3,444.1	14,475.5	6.8	152.7	260.0	419.5
13 Scen 13: Increase ventilator rate to \$550	7,281.0	4,462.2	3,553.6	15,296.7	6.8	152.7	260.0	419.5
14 Scen 14: Adjust DC Bases to Hit Expenditure Targets	7,013.3	4,149.3	3,345.2	14,507.8	6.8	152.7	260.0	419.5

## Preliminary SFY 2013 WI T19 FFS Nursing Home Model Scenario Results

Scenario Description	Nursing Facilities				ICFs/MR			
	For-Profit	Tax-Exempt	Local Govt	Total	For-Profit	Tax-Exempt	Local Govt	Total
<b>T19 FFS PDs</b>	2,694,321	1,927,947	1,260,143	5,882,410	2,893	26,209	37,484	66,586
<b>Expenditures PPD</b>								
2 Scen 2: SFY13 Base Scenario using SFY12 avg rates & SFY12 avg T19 CMI's, with DHS budgeted PDs	153.58	155.72	147.33	152.94	163.87	232.68	237.50	232.41
3 Scen 3: Impute 2011 CRs and calculate rates for SFY13 using SFY12 formula and average SFY12 acuity	153.13	155.61	147.28	152.69	162.98	232.23	237.52	232.20
4 Scen 4: Apply 2011 R2 Cost Reports and Property Valuations	153.11	155.84	147.29	152.76	162.98	232.10	237.52	232.15
5 Scen 5: Estimate MDS 3.0 Basis for All-Res CMI in 2010 CR Period	154.20	156.09	147.40	153.36	162.98	232.51	237.52	232.31
6 Scen 6: ICF/MR MAI	154.20	156.09	147.40	153.36	165.53	235.02	240.07	234.85
7 Scen 7: Labor Factors	154.23	156.09	147.46	153.39	165.53	235.02	239.78	234.68
8 Scen 8: Property Incentive Estimates	154.23	156.09	147.46	153.39	165.53	235.02	239.78	234.68
9 Scen 9: Average SFY13 acuity (old ventilator CMI treatment and Behavior/CI add-on)	155.66	157.14	149.25	154.77	165.53	235.02	239.78	234.68
10 Scen 10: New ventilator CMI treatment	155.44	156.67	148.96	154.46	165.53	235.02	239.78	234.68
11 Scen 11: Proposed Behavior/CI add-on	155.48	156.68	148.90	154.46	165.53	235.02	239.67	234.62
12 Scen 12: Adjust DC Bases to Hit Expenditure Targets	156.18	157.82	150.06	155.41	166.21	238.51	244.44	238.71
13 Scen 12: Adjust DC Bases to Hit Expenditure Targets	156.29	158.04	150.15	155.54	166.21	238.51	244.44	238.71
14 Scen 14: Adjust DC Bases to Hit Expenditure Targets	156.19	157.87	149.98	155.41	166.21	238.51	244.44	238.71
<b>Cumulative Increase in Expenditures PPD from Base Scenario</b>								
3 Scen 3: Impute 2011 CRs and calculate rates for SFY13 using SFY12 formula and average SFY12 acuity	(0.46)	(0.12)	(0.05)	(0.26)	(0.88)	(0.45)	0.02	(0.21)
4 Scen 4: Apply 2011 R2 Cost Reports and Property Valuations	(0.47)	0.12	(0.04)	(0.19)	(0.88)	(0.58)	0.02	(0.26)
5 Scen 5: Estimate MDS 3.0 Basis for All-Res CMI in 2010 CR Period	0.61	0.36	0.07	0.41	(0.88)	(0.16)	0.02	(0.09)
6 Scen 6: ICF/MR MAI	0.61	0.36	0.07	0.41	1.67	2.34	2.57	2.44
7 Scen 7: Labor Factors	0.65	0.36	0.13	0.45	1.66	2.34	2.27	2.27
8 Scen 8: Property Incentive Estimates	0.65	0.36	0.13	0.45	1.66	2.34	2.27	2.27
9 Scen 9: Average SFY13 acuity (old ventilator CMI treatment and Behavior/CI add-on)	2.08	1.42	1.92	1.83	1.66	2.34	2.27	2.27
10 Scen 10: New ventilator CMI treatment	1.86	0.95	1.63	1.51	1.66	2.34	2.27	2.27
11 Scen 11: Proposed Behavior/CI add-on	1.89	0.96	1.57	1.52	1.66	2.34	2.16	2.21
12 Scen 12: Adjust DC Bases to Hit Expenditure Targets	2.59	2.10	2.73	2.46	2.35	5.83	6.94	6.30
13 Scen 13: Increase ventilator rate to \$550	2.70	2.31	2.82	2.60	2.35	5.83	6.94	6.30
14 Scen 14: Adjust DC Bases to Hit Expenditure Targets	2.60	2.15	2.65	2.47	2.35	5.83	6.94	6.30

## Preliminary SFY 2013 WI T19 FFS Nursing Home Model Scenario Results

Scenario Description	Nursing Facilities				ICFs/MR			
	For-Profit	Tax-Exempt	Local Govt	Total	For-Profit	Tax-Exempt	Local Govt	Total
<b>T19 FFS PDs</b>	2,694,321	1,927,947	1,260,143	5,882,410	2,893	26,209	37,484	66,586
<b>Cumulative Percent Increase in Expenditures from Base Scenario</b>								
3 Scen 3: Impute 2011 CRs and calculate rates for SFY13 using SFY12 formula and average SFY12 acuity	-0.3%	-0.1%	0.0%	-0.2%	-0.5%	-0.2%	0.0%	-0.1%
4 Scen 4: Apply 2011 R2 Cost Reports and Property Valuations	-0.3%	0.1%	0.0%	-0.1%	-0.5%	-0.2%	0.0%	-0.1%
5 Scen 5: Estimate MDS 3.0 Basis for All-Res CMI in 2010 CR Period	0.4%	0.2%	0.0%	0.3%	-0.5%	-0.1%	0.0%	0.0%
6 Scen 6: ICF/MR MAI	0.4%	0.2%	0.0%	0.3%	1.0%	1.0%	1.1%	1.0%
7 Scen 7: Labor Factors	0.4%	0.2%	0.1%	0.3%	1.0%	1.0%	1.0%	1.0%
8 Scen 8: Property Incentive Estimates	0.4%	0.2%	0.1%	0.3%	1.0%	1.0%	1.0%	1.0%
9 Scen 9: Average SFY13 acuity (old ventilator CMI treatment and Behavior/CI add-on)	1.4%	0.9%	1.3%	1.2%	1.0%	1.0%	1.0%	1.0%
10 Scen 10: New ventilator CMI treatment	1.2%	0.6%	1.1%	1.0%	1.0%	1.0%	1.0%	1.0%
11 Scen 11: Proposed Behavior/CI add-on	1.2%	0.6%	1.1%	1.0%	1.0%	1.0%	0.9%	1.0%
12 Scen 12: Adjust DC Bases to Hit Expenditure Targets	1.7%	1.3%	1.9%	1.6%	1.4%	2.5%	2.9%	2.7%
13 Scen 13: Increase ventilator rate to \$550	1.8%	1.5%	1.9%	1.7%	1.4%	2.5%	2.9%	2.7%
14 Scen 14: Adjust DC Bases to Hit Expenditure Targets	1.7%	1.4%	1.8%	1.6%	1.4%	2.5%	2.9%	2.7%
<b>Increase in Gross Expenditures from Prior Scenario (000's)</b>								
3 Scen 3: Impute 2011 CRs and calculate rates for SFY13 using SFY12 formula and average SFY12 acuity	(1,232.5)	(221.8)	(63.4)	(1,517.7)	(2.6)	(11.8)	0.6	(13.8)
4 Scen 4: Apply 2011 R2 Cost Reports and Property Valuations	(40.1)	452.1	17.1	429.1	-	(3.3)	0.1	(3.3)
5 Scen 5: Estimate MDS 3.0 Basis for All-Res CMI in 2010 CR Period	2,921.6	471.8	134.0	3,527.4	-	10.9	0.0	10.9
6 Scen 6: ICF/MR MAI	-	-	-	-	7.4	65.7	95.6	168.6
7 Scen 7: Labor Factors	106.4	1.0	76.5	183.8	(0.0)	(0.0)	(11.1)	(11.1)
8 Scen 8: Property Incentive Estimates	-	-	-	-	-	-	-	-
9 Scen 9: Average SFY13 acuity (old ventilator CMI treatment and Behavior/CI add-on)	3,848.8	2,027.9	2,257.4	8,134.1	(0.0)	-	(0.0)	(0.0)
10 Scen 10: New ventilator CMI treatment	(595.2)	(900.3)	(362.7)	(1,858.1)	0.0	0.0	-	0.0
11 Scen 11: Proposed Behavior/CI add-on	94.7	12.1	(83.6)	23.2	(0.0)	(0.0)	(4.0)	(4.0)
12 Scen 12: Adjust DC Bases to Hit Expenditure Targets	1,885.1	2,199.8	1,468.8	5,553.7	2.0	91.4	178.9	272.2
13 Scen 13: Increase ventilator rate to \$550	292.0	419.8	109.5	821.3	-	0.0	-	-
14 Scen 14: Adjust DC Bases to Hit Expenditure Targets	(267.7)	(312.9)	(208.4)	(788.9)	-	-	-	-

## Preliminary SFY 2013 WI T19 FFS Nursing Home Model Scenario Results

Scenario Description	Nursing Facilities				ICFs/MR			
	For-Profit	Tax-Exempt	Local Govt	Total	For-Profit	Tax-Exempt	Local Govt	Total
<b>T19 FFS PDs</b>	2,694,321	1,927,947	1,260,143	5,882,410	2,893	26,209	37,484	66,586
<b>Increase in Expenditures PPD from Prior Scenario</b>								
3 Scen 3: Impute 2011 CRs and calculate rates for SFY13 using SFY12 formula and average SFY12 acuity	(0.46)	(0.12)	(0.05)	(0.26)	(0.88)	(0.45)	0.02	(0.21)
4 Scen 4: Apply 2011 R2 Cost Reports and Property Valuations	(0.01)	0.23	0.01	0.07	-	(0.13)	0.00	(0.05)
5 Scen 5: Estimate MDS 3.0 Basis for All-Res CMI in 2010 CR Period	1.08	0.24	0.11	0.60	-	0.42	0.00	0.16
6 Scen 6: ICF/MR MAI	-	-	-	-	2.55	2.51	2.55	2.53
7 Scen 7: Labor Factors	0.04	0.00	0.06	0.03	(0.00)	(0.00)	(0.30)	(0.17)
8 Scen 8: Property Incentive Estimates	-	-	-	-	-	-	-	-
9 Scen 9: Average SFY13 acuity (old ventilator CMI treatment and Behavior/CI add-on)	1.43	1.05	1.79	1.38	(0.00)	-	(0.00)	(0.00)
10 Scen 10: New ventilator CMI treatment	(0.22)	(0.47)	(0.29)	(0.32)	0.00	0.00	-	0.00
11 Scen 11: Proposed Behavior/CI add-on	0.04	0.01	(0.07)	0.00	(0.00)	(0.00)	(0.11)	(0.06)
12 Scen 12: Adjust DC Bases to Hit Expenditure Targets	0.70	1.14	1.17	0.94	0.68	3.49	4.77	4.09
13 Scen 13: Increase ventilator rate to \$550	0.11	0.22	0.09	0.14	-	0.00	-	-
14 Scen 14: Adjust DC Bases to Hit Expenditure Targets	(0.10)	(0.16)	(0.17)	(0.13)	-	-	-	-
<b>Percent Increase in Expenditures from Prior Scenario</b>								
3 Scen 3: Impute 2011 CRs and calculate rates for SFY13 using SFY12 formula and average SFY12 acuity	-0.3%	-0.1%	0.0%	-0.2%	-0.5%	-0.2%	0.0%	-0.1%
4 Scen 4: Apply 2011 R2 Cost Reports and Property Valuations	0.0%	0.2%	0.0%	0.0%	0.0%	-0.1%	0.0%	0.0%
5 Scen 5: Estimate MDS 3.0 Basis for All-Res CMI in 2010 CR Period	0.7%	0.2%	0.1%	0.4%	0.0%	0.2%	0.0%	0.1%
6 Scen 6: ICF/MR MAI	0.0%	0.0%	0.0%	0.0%	1.6%	1.1%	1.1%	1.1%
7 Scen 7: Labor Factors	0.0%	0.0%	0.0%	0.0%	0.0%	0.0%	-0.1%	-0.1%
8 Scen 8: Property Incentive Estimates	0.0%	0.0%	0.0%	0.0%	0.0%	0.0%	0.0%	0.0%
9 Scen 9: Average SFY13 acuity (old ventilator CMI treatment and Behavior/CI add-on)	0.9%	0.7%	1.2%	0.9%	0.0%	0.0%	0.0%	0.0%
10 Scen 10: New ventilator CMI treatment	-0.1%	-0.3%	-0.2%	-0.2%	0.0%	0.0%	0.0%	0.0%
11 Scen 11: Proposed Behavior/CI add-on	0.0%	0.0%	0.0%	0.0%	0.0%	0.0%	0.0%	0.0%
12 Scen 12: Adjust DC Bases to Hit Expenditure Targets	0.5%	0.7%	0.8%	0.6%	0.4%	1.5%	2.0%	1.8%
13 Scen 13: Increase ventilator rate to \$550	0.1%	0.1%	0.1%	0.1%	0.0%	0.0%	0.0%	0.0%
14 Scen 14: Adjust DC Bases to Hit Expenditure Targets	-0.1%	-0.1%	-0.1%	-0.1%	0.0%	0.0%	0.0%	0.0%

## Preliminary SFY 2013 WI T19 FFS Nursing Home Model Scenario Results

Scenario Description	Nursing Facilities				ICFs/MR			
	For-Profit	Tax-Exempt	Local Govt	Total	For-Profit	Tax-Exempt	Local Govt	Total
T19 FFS PDs	2,694,321	1,927,947	1,260,143	5,882,410	2,893	26,209	37,484	66,586

## Preliminary SFY 2013 WI T19 FFS Nursing Home Model Rate Formula Values by Scenario

Scenario Description	DC Nursing Base		DC Other Base		Supp. Serv. Target		Beh/CI Base	Vent. Rate
	NF	ICF/MR	NF	ICF/MR	NF	ICF/MR		

### Rate Formula Values

2	Scen 2: SFY13 Base Scenario using SFY12 avg rates & SFY12 avg T19 CMI's, with DHS budgeted PDs	73.92	66.74	12.36	14.40	45.60	43.56	0.12	500.00
12	Scen 12: Adjust DC Bases to Hit Expenditure Targets (Vent. rate = \$500)	75.01	68.81	12.54	14.85	45.60	43.56	0.29	500.00
14	Scen 14: Adjust DC Bases to Hit Expenditure Targets (Vent rate = \$550)	74.85	68.81	12.52	14.85	45.60	43.56	0.29	550.00

### Percentage of Base Scenario (Scen 2) Values

12	Scen 12: Adjust DC Bases to Hit Expenditure Targets (Vent. rate = \$500)	101.5%	103.1%	101.5%	103.1%	100.0%	100.0%	241.7%	100.0%
14	Scen 14: Adjust DC Bases to Hit Expenditure Targets (Vent rate = \$550)	101.3%	103.1%	101.3%	103.1%	100.0%	100.0%	241.7%	110.0%

## Inflation Assumptions

Inflation Assumptions	Global Insight - 2011 Q1	Global Insight - 2012 Q1
	NH Wages	NH Wages
<b>2010 Cost Report Period to SFY12 Rate Period</b>		
SFY Cost Reporting Period	4.7%	0.6%
Calendar Year Cost Reporting Period	4.2%	0.1%
<b>2010 Cost Report Period to SFY13 Rate Period</b>		
SFY Cost Reporting Period	7.4%	2.6%
Calendar Year Cost Reporting Period	6.8%	2.1%

## WI Medicaid Nursing Home Average Nursing Wage per Hour

Excluding County and State/Tribal-Owned Nursing Homes (excludes purchased services and fringe benefits)

Labor Regions	Modeled T19 PDs		Facility Count		Wages (thousands)		Hours (thousands)		Wage per Hour			Rescaled Industry Index		
	SFY12 Pds	SFY13 Pds	2009 CR	2010 CR	2009 CR	2010 CR	2009 CR	2010 CR	2009 CR	2010 CR	% Chg	SFY12	SFY13	% Chg
Rural	2,461,171	2,411,578	127	131	198,031	207,234	12,189	12,673	16.25	16.35	0.7%	0.956	0.951	-0.5%
Minneapolis	126,078	143,261	13	13	15,583	15,667	933	934	16.69	16.77	0.4%	0.982	0.975	-0.7%
Duluth/Superior	72,166	76,748	4	4	8,041	7,910	479	458	16.78	17.28	3.0%	0.987	1.005	1.8%
Eau Claire	134,897	148,826	11	11	21,203	20,707	1,372	1,254	15.45	16.51	6.8%	0.909	0.960	5.6%
La Crosse	149,308	128,959	5	5	13,358	14,021	791	771	16.88	18.19	7.8%	0.993	1.058	6.5%
Wausau	181,060	159,487	6	7	14,306	15,217	810	853	17.65	17.84	1.1%	1.038	1.037	-0.1%
Madison	436,627	431,219	30	30	61,511	62,450	3,325	3,316	18.50	18.83	1.8%	1.088	1.095	0.6%
Janesville	167,237	153,900	8	7	15,081	14,730	937	877	16.10	16.79	4.3%	0.947	0.976	3.1%
Racine	99,266	111,404	5	5	12,396	11,562	715	673	17.34	17.19	-0.8%	1.020	1.000	-2.0%
Kenosha	181,874	178,334	8	8	19,813	19,101	1,114	1,060	17.78	18.02	1.3%	1.046	1.047	0.1%
Green Bay	293,521	318,249	18	18	32,183	32,302	1,958	1,978	16.44	16.33	-0.7%	0.967	0.949	-1.9%
Sheboygan	161,350	140,053	8	9	11,348	14,134	638	781	17.80	18.09	1.7%	1.047	1.052	0.5%
Milwaukee	1,103,633	1,064,745	58	59	185,265	180,577	10,110	9,834	18.33	18.36	0.2%	1.078	1.067	-1.0%
Appleton	199,279	200,678	10	11	18,833	19,950	1,117	1,142	16.86	17.47	3.6%	0.992	1.016	2.4%
Oshkosh	197,773	175,784	6	6	17,057	17,424	993	984	17.17	17.71	3.1%	1.010	1.030	2.0%
Fond Du Lac	122,796	105,772	8	8	13,824	14,177	851	842	16.24	16.84	3.7%	0.955	0.979	2.5%
Total	6,088,035	5,948,996	325	332	657,834	667,164	38,333	38,431	17.00	17.20	1.2%	1.000	1.000	0.0%

## WI Medicaid Nursing Home Preliminary SFY13 Labor Factors

Labor Region	Modeled T19 PDs		Unadjusted PPS Index		Adj. to Rural Base		Rescaled PPS Index			Preliminary WI Labor Factors*		
	SFY12 Pds	SFY13 Pds	FFY12	FFY13	FFY12	FFY13	FFY12	FFY13	% Chg	SFY12	SFY13	% Chg
Rural	2,461,171	2,411,578	0.8997	0.9142	0.8997	0.9142	0.917	0.921	0.4%	0.956	0.951	-0.5%
Minneapolis	126,078	143,261	1.1105	1.1336	1.1623	1.1866	1.185	1.196	0.9%	1.185	1.196	0.9%
Duluth/Superior	72,166	76,748	1.0335	1.0741	1.0817	1.1243	1.103	1.133	2.7%	1.103	1.133	2.7%
Eau Claire	134,897	148,826	0.9597	0.9705	1.0045	1.0158	1.024	1.024	0.0%	0.909	0.960	5.6%
La Crosse	149,308	128,959	0.9685	1.0070	1.0137	1.0540	1.034	1.062	2.7%	0.993	1.058	6.5%
Wausau	181,060	159,487	0.8962	0.8921	0.9380	0.9338	0.956	0.941	-1.6%	1.038	1.037	-0.1%
Madison	436,627	431,219	1.1234	1.1264	1.1758	1.1790	1.199	1.188	-0.9%	1.088	1.095	0.6%
Janesville	167,237	153,900	0.9234	0.9458	0.9665	0.9900	0.985	0.998	1.3%	0.947	0.976	3.1%
Racine	99,266	111,404	0.8630	0.9158	0.9033	0.9586	0.921	0.966	4.9%	1.020	1.000	-2.0%
Kenosha	181,874	178,334	1.0311	1.0558	1.0792	1.1051	1.100	1.114	1.3%	1.046	1.047	0.1%
Green Bay	293,521	318,249	0.9824	0.9793	1.0282	1.0250	1.048	1.033	-1.4%	0.967	0.949	-1.9%
Sheboygan	161,350	140,053	0.9303	0.9515	0.9737	0.9959	0.993	1.004	1.1%	1.047	1.052	0.5%
Milwaukee	1,103,633	1,064,745	0.9961	0.9931	1.0426	1.0395	1.063	1.047	-1.5%	1.078	1.067	-1.0%
Appleton	199,279	200,678	0.9226	0.9268	0.9656	0.9701	0.985	0.978	-0.7%	0.992	1.016	2.4%
Oshkosh	197,773	175,784	0.9319	0.9433	0.9754	0.9874	0.995	0.995	0.0%	1.010	1.030	2.0%
Fond Du Lac	122,796	105,772	0.9291	0.9158	0.9724	0.9586	0.992	0.966	-2.6%	0.955	0.979	2.5%
Total	6,088,035	5,948,996			0.9808	0.9924	1.000	1.000	0.0%	1.006	1.007	0.1%

\*Sauk County moved to the Madison Labor Region beginning SFY07.

\*Rock County moved to the Madison Labor Region beginning SFY09.

\$ 160.62 \$ 163.58 <--PPS Urban Base

\$ 153.46 \$ 156.28 <--PPS Rural Base

## Final SFY13 Labor Factors

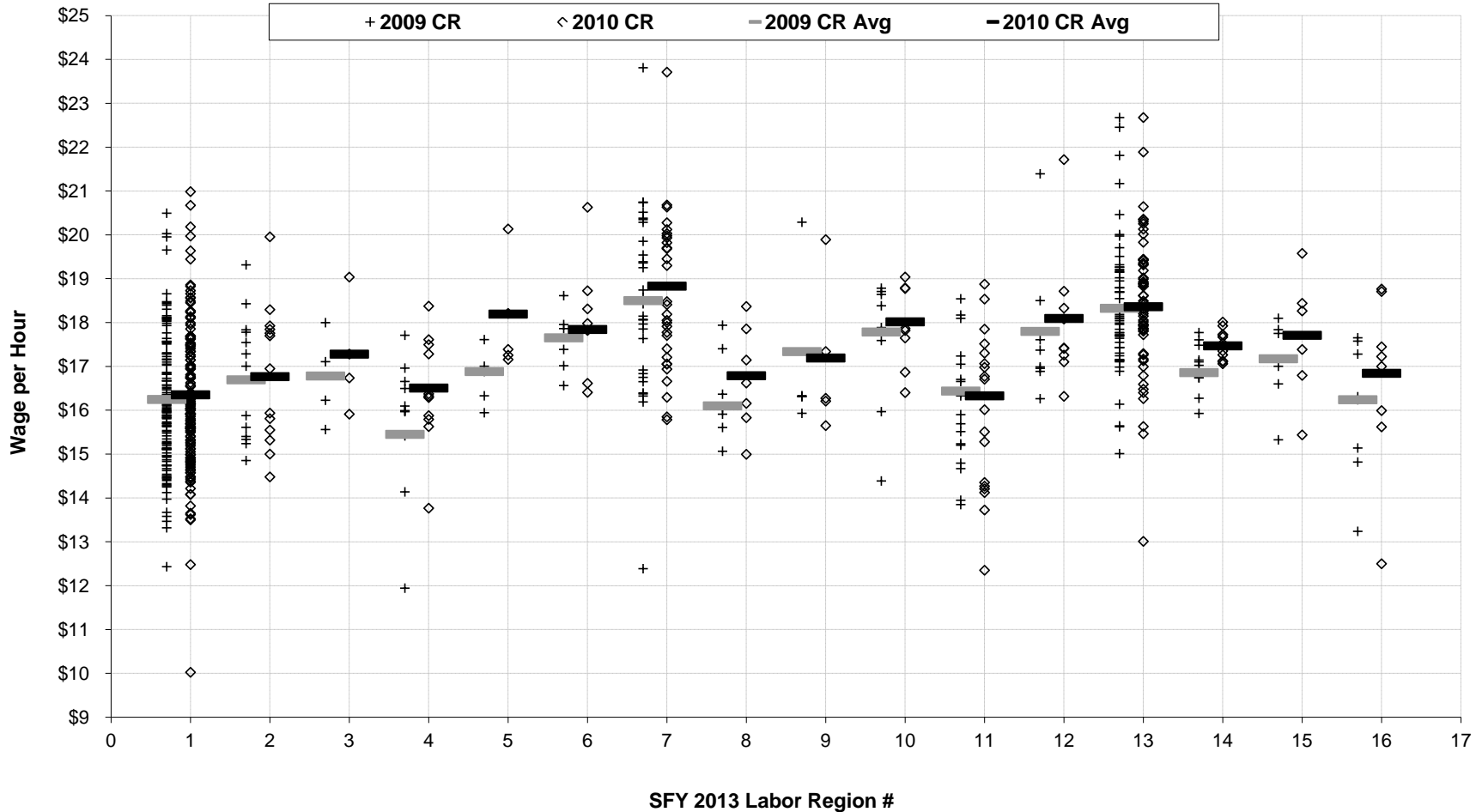
Final SFY11	Final SFY12	Prelim. SFY13	Final SFY13*	% Chg
0.956	0.956	0.951	0.954	-0.2%
1.155	1.164	1.196	1.172	0.7%
1.073	1.080	1.133	1.095	1.4%
0.965	0.948	0.960	0.958	1.1%
1.025	1.018	1.058	1.034	1.6%
1.037	1.038	1.037	1.037	-0.1%
1.090	1.088	1.095	1.091	0.3%
1.090	1.088	1.095	1.091	0.3%
1.003	1.006	1.000	1.003	-0.3%
1.040	1.040	1.047	1.042	0.2%
0.969	0.972	0.949	0.963	-0.9%
1.034	1.039	1.052	1.042	0.3%
1.076	1.076	1.067	1.073	-0.3%
1.000	0.997	1.016	1.004	0.7%
0.998	1.007	1.030	1.012	0.5%
0.926	0.941	0.979	0.949	0.9%

\*Final values based upon a three-year moving average.

\*Janesville's Labor Region final labor factor is set equal to □

Madison's Labor Region final labor factor.

### SFY13 Wage per Hour by Labor Region \*



- |   |                 |   |            |    |           |    |             |
|---|-----------------|---|------------|----|-----------|----|-------------|
| 1 | Rural           | 5 | La Crosse  | 9  | Racine    | 13 | Milwaukee   |
| 2 | Minneapolis     | 6 | Wausau     | 10 | Kenosha   | 14 | Appleton    |
| 3 | Duluth/Superior | 7 | Madison    | 11 | Green Bay | 15 | Oshkosh     |
| 4 | Eau Claire      | 8 | Janesville | 12 | Sheboygan | 16 | Fond Du Lac |

\* Includes non-County and non-States/Tribal Owned Facilities with 2010 Final Cost Reports.



WI 12/31/2011 Nursing Home Non-DD Residents								All-Res Non-DD 2011 Cost Report Period							
Includes in-house and bedhold residents; excludes TBI and ventilator residents								Includes in-house and bedhold residents; excludes TBI and ventilator							
16,324		410		0.974		0.945		29,046		1,639		1.038			
Medicaid FFS Non-DD Residents				All-Resident Non-DD Residents				All-Resident FFS Non-DD CMI							
PopID	Count	RUG-48 NA	RUG-48 CMI	Beh/CI Score	Count	RUG-48 NA	RUG-48 CMI	PopID	Sep-10 RUG-34	Dec-10	Mar-11	Jun-11	Sep-11	Dec-11	
103	41	1	0.994	1.060	60	1	1.016	103	0.968	0.970	0.974	0.958	1.008	1.016	
105	27	2	1.160	0.610	52	4	1.233	105	1.211	1.216	1.211	1.240	1.110	1.233	
107	14	-	0.915	2.136	39	6	1.109	107	1.065	1.124	1.080	1.065	1.126	1.109	
108	33	2	1.088	1.695	63	5	1.144	108	1.301	1.175	1.191	1.073	1.141	1.144	
109	24	2	0.926	0.395	46	8	1.012	109	1.291	1.205	1.119	1.097	1.082	1.012	
110	54	7	1.015	0.695	87	11	1.124	110	1.259	1.127	1.142	1.145	1.136	1.124	
111	27	1	0.999	0.804	74	13	1.164	111	1.335	1.141	1.129	1.165	1.199	1.164	
112	73	-	0.889	1.110	98	3	0.960	112	1.117	0.966	1.037	1.015	0.984	0.960	
113	76	-	0.886	0.536	178	13	1.045	113	1.158	1.054	1.067	1.063	1.038	1.045	
114	46	1	1.023	0.528	69	2	1.058	114	1.103	1.038	1.087	1.070	1.065	1.058	
116	31	-	0.964	0.705	47	-	0.962	116	1.033	0.936	0.973	1.006	1.007	0.962	
118	29	1	1.161	1.275	73	13	1.218	118	1.215	1.158	1.142	1.075	1.140	1.218	
120	44	-	0.885	0.416	100	5	1.013	120	1.111	0.970	0.992	0.969	0.980	1.013	
140	27	-	0.798	0.815	31	-	0.848	140	1.132	0.793	0.778	0.868	0.840	0.848	
141	8	-	1.103	0.469	19	-	0.891	141	1.326	0.976	0.914	0.897	0.852	0.891	
142	29	1	0.876	1.030	45	4	0.968	142	1.028	0.880	0.887	0.906	0.961	0.968	
143	38	2	0.864	1.032	57	4	0.894	143	1.035	0.900	0.887	0.960	0.879	0.894	
145	53	2	0.941	0.983	72	3	1.043	145	1.118	1.123	1.107	1.123	1.054	1.043	
146	59	2	1.091	0.346	125	12	1.158	146	1.163	1.062	1.165	1.122	1.097	1.158	
147	8	-	1.106	1.375	14	-	1.113	147	1.017	0.969	1.019	0.964	0.973	1.113	
148	55	4	0.960	0.887	117	12	1.005	148	1.041	0.980	0.980	1.034	0.995	1.005	
150	67	2	1.155	0.959	105	8	1.248	150	1.258	1.191	1.198	1.271	1.243	1.248	
151	66	3	0.919	0.693	107	4	0.911	151	1.056	0.924	0.946	0.971	0.928	0.911	
153	35	1	0.871	0.607	56	5	0.931	153	1.070	0.979	0.974	0.955	0.943	0.931	
154	62	-	1.069	0.599	102	2	1.103	154	1.061	0.983	0.996	1.103	1.082	1.103	
155	68	1	1.087	1.093	139	7	1.122	155	1.141	1.047	1.071	1.160	1.126	1.122	
157	48	2	1.054	1.225	75	4	1.149	157	1.112	1.084	1.167	1.149	1.127	1.149	
158	35	-	0.961	1.096	65	2	1.019	158	1.088	1.028	1.064	1.049	1.079	1.019	
159	93	3	0.936	1.375	139	4	0.965	159	0.967	0.916	0.929	0.952	0.966	0.965	
162	30	3	0.953	0.343	54	7	1.036	162	1.037	0.833	1.018	0.902	0.994	1.036	
163	15	1	0.923	1.736	41	1	0.928	163	1.085	1.024	0.955	1.008	0.958	0.928	
164	21	-	0.970	0.981	30	-	1.033	164	0.979	0.830	0.900	0.908	0.984	1.033	
165	44	-	0.884	1.161	69	1	0.935	165	1.012	0.902	0.954	0.934	0.988	0.935	
167	50	1	1.010	1.076	90	5	1.091	167	1.173	1.082	1.102	1.052	1.116	1.091	
168	80	1	1.046	0.485	162	8	1.119	168	1.159	1.074	1.109	1.165	1.112	1.119	
170	87	2	0.915	0.476	156	6	1.044	170	1.033	0.956	1.006	1.012	1.031	1.044	
171	52	-	0.782	2.189	60	-	0.807	171	0.980	0.843	0.881	0.806	0.779	0.807	
173	35	-	0.971	0.367	56	3	1.061	173	1.067	0.964	1.065	1.084	1.113	1.061	
174	38	1	0.873	1.512	50	2	0.877	174	0.989	0.935	0.965	0.939	0.916	0.877	
176	48	-	0.948	1.271	116	2	1.006	176	1.037	0.975	0.974	0.981	0.996	1.006	
201	33	-	1.031	0.735	81	6	1.090	201	1.074	1.092	1.032	1.028	1.059	1.090	
202	39	-	1.032	1.046	53	1	1.057	202	0.959	0.942	0.954	1.009	0.990	1.057	
203	31	4	0.874	1.462	94	10	0.949	203	1.152	1.103	1.022	1.024	1.024	0.949	
207	42	-	1.210	0.843	74	6	1.220	207	1.224	1.194	1.192	1.221	1.196	1.220	
208	76	3	0.845	0.894	111	8	0.963	208	1.019	0.972	0.951	0.978	0.937	0.963	
209	42	1	1.009	0.899	83	2	1.093	209	1.087	1.035	1.031	1.047	1.052	1.093	
210	97	-	1.003	0.885	216	10	1.101	210	1.168	1.104	1.095	1.083	1.089	1.101	
212	39	1	1.206	0.934	64	6	1.274	212	1.185	0.952	1.029	1.109	1.065	1.274	
213	36	-	0.976	0.986	50	-	1.052	213	1.064	1.018	1.081	1.127	1.097	1.052	
214	39	-	0.931	0.712	110	8	1.134	214	1.221	1.132	1.193	1.173	1.184	1.134	
216	19	1	1.028	0.647	58	8	1.072	216	1.134	1.010	1.081	1.132	1.138	1.072	
217	27	1	0.961	0.804	49	2	0.929	217	0.941	0.934	0.962	0.957	0.888	0.929	
218	28	1	0.965	0.659	56	3	1.102	218	1.071	1.033	1.091	1.008	1.072	1.102	
221	108	2	1.029	1.700	154	8	1.028	221	0.998	0.935	0.976	1.073	1.050	1.028	
222	-	-	-	-	-	-	-	222	1.092	0.931	0.983	0.953	0.961	-	
224	53	2	0.952	0.903	70	6	0.982	224	0.985	0.915	0.922	0.919	0.990	0.982	
226	26	-	1.012	1.290	55	1	1.108	226	1.082	0.998	1.044	1.160	1.022	1.108	
227	43	-	1.089	1.762	62	1	1.117	227	1.052	1.026	1.057	1.047	1.126	1.117	
228	49	2	0.974	0.853	78	4	0.989	228	1.138	0.990	1.030	1.048	1.026	0.989	
229	64	-	0.904	0.865	95	5	0.989	229	1.166	0.996	0.988	0.995	1.002	0.989	
230	35	2	1.038	0.915	119	16	1.114	230	1.150	1.048	1.076	1.114	1.094	1.114	
231	67	3	0.969	0.902	102	7	1.027	231	1.038	0.962	1.059	1.039	0.994	1.027	
232	28	1	1.097	1.180	41	2	1.147	232	1.066	0.902	1.001	0.991	1.123	1.147	
233	57	-	0.922	0.914	82	1	1.005	233	1.096	0.975	1.024	1.019	0.973	1.005	
235	44	-	1.020	0.843	70	4	1.077	235	1.190	1.091	1.180	1.143	1.109	1.077	

WI 12/31/2011 Nursing Home Non-DD Residents								All-Res Non-DD 2011 Cost Report Period																	
Includes in-house and bedhold residents; excludes TBI and ventilator residents								Includes in-house and bedhold residents; excludes TBI and ventilator																	
16,324		410		0.974		0.945		29,046		1,639		1.038		1.102		1.018		1.030		1.036		1.036		1.038	
Medicaid FFS Non-DD Residents					All-Resident Non-DD Residents			All-Resident FFS Non-DD CMI																	
PopID	Count	RUG-48 NA	RUG-48 CMI	Beh/CI Score	Count	RUG-48 NA	RUG-48 CMI	PopID	Sep-10 RUG-34	Dec-10	Mar-11	Jun-11	Sep-11	Dec-11											
236	35	-	0.935	0.837	65	2	1.001	236	1.092	0.960	1.002	1.007	1.066	1.001											
237	44	1	0.896	0.701	70	3	0.968	237	1.088	0.962	1.015	1.026	1.039	0.968											
238	41	-	0.996	0.774	70	1	1.113	238	1.135	1.177	1.130	1.145	1.078	1.113											
239	29	1	1.226	0.329	48	2	1.226	239	1.204	1.201	1.289	1.267	1.290	1.226											
241	64	1	0.971	1.175	117	2	1.044	241	1.133	1.027	1.070	1.022	1.020	1.044											
242	67	3	1.007	0.749	90	8	1.080	242	1.155	1.027	1.039	1.074	1.034	1.080											
243	32	-	0.836	1.059	48	-	0.893	243	0.956	0.870	0.853	0.892	0.950	0.893											
244	39	1	0.963	1.528	58	2	0.993	244	1.142	0.988	0.979	0.944	0.977	0.993											
245	-	-			7	-	0.941	245						0.941											
246	27	1	0.944	0.827	39	1	0.958	246	1.025	0.989	0.941	1.084	1.037	0.958											
247	49	2	1.082	0.561	130	11	1.120	247	1.180	1.043	1.114	1.090	1.100	1.120											
249	63	1	1.015	0.522	145	5	1.104	249	1.048	1.055	1.062	1.061	1.123	1.104											
250	36	1	0.909	1.526	75	3	0.914	250	1.102	0.964	0.983	0.964	0.944	0.914											
270	27	1	0.944	2.260	46	3	1.076	270	0.991	0.917	0.930	1.007	0.967	1.076											
271	99	4	0.936	1.283	112	4	0.942	271	0.966	0.949	0.945	0.927	0.949	0.942											
275	53	4	1.030	0.592	83	7	1.058	275	1.136	0.994	1.067	1.074	1.125	1.058											
276	86	-	0.894	2.234	113	1	0.914	276	0.969	0.852	0.906	0.855	0.855	0.914											
277	16	-	0.904	1.050	29	1	1.000	277	1.118	0.975	0.942	1.016	0.980	1.000											
278	60	-	0.962	0.984	90	2	1.030	278	1.123	1.037	1.027	1.039	1.054	1.030											
280	51	-	0.906	0.994	103	3	1.002	280	1.081	0.961	0.986	0.953	0.993	1.002											
281	34	2	0.993	0.567	57	7	1.126	281	1.302	1.164	1.163	1.137	1.150	1.126											
304	67	3	0.896	0.671	119	7	0.979	304	1.073	0.947	0.950	0.965	0.962	0.979											
305	36	1	0.938	0.597	55	1	1.039	305	0.996	0.986	1.016	0.969	0.950	1.039											
306	43	1	0.835	0.949	73	7	0.873	306	1.036	0.889	0.970	0.901	0.904	0.873											
307	56	2	1.101	0.683	78	5	1.120	307	1.098	1.049	1.047	1.081	1.146	1.120											
308	19	-	1.004	2.150	48	4	1.043	308	1.081	1.063	1.036	0.992	1.032	1.043											
309	26	2	0.967	0.702	48	3	1.061	309	1.108	1.064	1.053	1.087	1.109	1.061											
310	34	2	1.040	1.233	85	7	1.126	310	1.223	1.109	1.041	1.152	1.100	1.126											
312	37	1	1.101	0.453	56	5	1.153	312	1.034	0.930	0.981	0.942	1.007	1.153											
313	27	1	0.856	0.558	88	9	0.994	313	1.045	0.989	0.945	1.003	0.987	0.994											
314	5	-	0.830	0.550	36	1	1.208	314		1.041	1.133	1.062	1.046	1.208											
331	33	1	1.052	1.014	76	6	1.052	331	1.066	0.975	0.964	1.008	1.027	1.052											
332	25	-	0.852	0.988	46	1	0.929	332	0.989	0.907	0.909	0.969	1.023	0.929											
334	39	-	0.958	0.990	72	3	1.024	334	1.065	0.952	0.934	0.956	0.936	1.024											
336	20	-	0.931	1.083	42	4	0.962	336	1.164	1.051	1.186	1.028	1.023	0.962											
337	58	-	0.928	0.769	85	5	1.047	337	1.077	0.911	0.984	0.956	0.990	1.047											
338	71	2	1.065	1.080	109	7	1.123	338	1.120	1.079	1.128	1.046	1.066	1.123											
339	36	3	1.038	0.716	57	6	1.090	339	1.089	1.017	1.017	0.995	1.035	1.090											
340	62	1	0.996	0.573	92	2	1.077	340	1.096	1.006	1.037	1.039	1.031	1.077											
341	54	2	0.918	1.063	87	13	0.970	341	1.173	0.955	0.941	1.000	0.930	0.970											
342	91	1	0.974	0.467	168	12	1.101	342	1.179	1.133	1.104	1.104	1.099	1.101											
343	32	1	0.905	0.690	60	3	1.005	343	0.992	0.950	0.924	1.008	1.027	1.005											
344	49	1	0.924	0.866	119	3	1.058	344	1.081	1.017	1.004	0.954	1.033	1.058											
347	42	-	1.037	1.987	67	-	1.121	347	1.192	1.098	1.186	1.156	1.147	1.121											
348	24	1	0.903	1.474	51	3	1.086	348	1.039	0.997	1.066	1.049	1.020	1.086											
349	34	1	0.887	1.220	46	3	0.958	349	1.042	0.890	0.916	0.898	0.907	0.958											
350	66	3	0.993	1.033	103	6	1.055	350	1.134	0.913	0.996	1.088	1.031	1.055											
351	45	3	0.999	0.660	108	14	1.118	351	1.193	1.159	1.203	1.159	1.127	1.118											
352	37	2	1.005	0.569	129	11	1.155	352	1.241	1.173	1.120	1.118	1.126	1.155											
353	15	-	0.979	0.667	69	7	1.325	353	1.019	1.020	1.058	1.215	1.265	1.325											
371	37	1	1.081	0.325	58	2	1.169	371	1.159	1.083	1.120	1.042	1.021	1.169											
372	25	3	0.794	0.866	32	3	0.805	372	0.938	0.889	0.929	0.798	0.930	0.805											
376	20	-	1.088	0.638	35	1	1.042	376	1.033	0.961	0.996	1.084	1.023	1.042											
377	54	2	0.957	0.867	81	9	1.018	377	1.155	1.055	1.102	1.037	1.057	1.018											
378	19	-	0.987	0.734	36	-	1.022	378	1.119	1.063	1.095	1.043	1.013	1.022											
380	78	3	0.848	1.578	107	9	0.871	380	1.011	0.898	0.897	0.896	0.871	0.871											
381	48	-	1.021	0.784	68	1	1.017	381	1.105	0.929	0.979	1.053	1.016	1.017											
382	29	-	1.003	0.864	36	-	0.980	382	1.018	1.021	1.067	1.069	1.046	0.980											
383	22	-	1.077	0.895	45	-	0.964	383	1.064	0.999	1.056	1.057	1.124	0.964											
384	41	1	0.928	0.465	61	5	0.979	384	1.090	1.016	1.014	0.995	1.042	0.979											
385	49	2	0.957	0.421	91	10	1.061	385	1.188	1.038	1.101	1.078	1.082	1.061											
386	69	3	1.013	3.090	95	4	1.040	386	1.007	1.035	0.988	0.996	0.934	1.040											
387	14	-	0.951	0.561	20	1	0.988	387	0.974	0.967	0.961	0.987	1.027	0.988											
388	21	2	0.983	2.179	41	3	1.049	388	1.082	1.018	1.047	1.118	1.154	1.049											
389	13	-	0.878	0.442	41	4	1.021	389	1.014	0.956	0.976	0.995	1.028	1.021											

WI 12/31/2011 Nursing Home Non-DD Residents								All-Res Non-DD 2011 Cost Report Period																	
Includes in-house and bedhold residents; excludes TBI and ventilator residents								Includes in-house and bedhold residents; excludes TBI and ventilator																	
16,324		410		0.974		0.945		29,046		1,639		1.038		1.102		1.018		1.030		1.036		1.036		1.038	
Medicaid FFS Non-DD Residents					All-Resident Non-DD Residents			All-Resident FFS Non-DD CMI																	
PopID	Count	RUG-48 NA	RUG-48 CMI	Beh/CI Score	Count	RUG-48 NA	RUG-48 CMI	PopID	Sep-10 RUG-34	Dec-10	Mar-11	Jun-11	Sep-11	Dec-11											
390	34	2	0.959	0.820	55	3	1.004	390	1.033	1.018	1.007	1.062	1.050	1.004											
392	5	-	0.894	0.480	50	4	1.112	392	1.156	0.914	0.929	1.053	1.035	1.112											
394	26	-	0.929	1.360	53	-	1.049	394	1.114	0.987	1.026	0.961	1.012	1.049											
401	13	-	0.922	0.262	53	1	1.052	401	1.196	1.148	1.128	1.110	1.088	1.052											
402	55	1	0.938	0.630	69	3	0.998	402	1.087	0.877	0.936	0.963	1.029	0.998											
405	32	1	0.864	0.968	49	3	0.890	405	0.961	0.890	0.975	0.952	0.947	0.890											
408	21	1	0.917	1.425	39	4	0.959	408	1.061	0.984	0.931	0.917	0.953	0.959											
409	47	1	1.100	0.702	87	1	1.180	409	1.182	1.157	1.231	1.163	1.206	1.180											
410	41	2	1.218	0.440	80	10	1.262	410	1.399	1.233	1.253	1.249	1.274	1.262											
411	25	-	1.025	2.782	57	3	1.159	411	1.417	1.133	1.176	1.123	1.211	1.159											
412	21	-	1.002	2.179	36	1	0.990	412	1.010	0.994	1.000	1.026	1.067	0.990											
413	35	-	0.991	1.459	57	3	1.025	413	1.133	0.916	0.920	0.956	0.948	1.025											
414	10	-	0.840	0.500	22	1	0.938	414	1.022	0.940	0.869	0.923	0.899	0.938											
416	99	3	0.922	0.817	187	11	1.012	416	1.169	1.033	0.999	1.003	0.991	1.012											
418	14	1	1.087	0.281	55	10	1.194	418	1.421	1.284	1.250	1.324	1.312	1.194											
422	75	1	1.118	1.189	186	7	1.087	422	1.080	1.027	1.059	1.058	1.112	1.087											
424	40	1	1.006	0.823	52	1	1.043	424	1.051	0.981	0.975	0.957	0.986	1.043											
427	74	-	0.958	0.644	163	7	1.077	427	1.138	1.043	1.029	1.089	1.088	1.077											
429	60	-	1.047	2.038	79	2	1.067	429	1.108	1.023	1.064	1.047	1.121	1.067											
430	22	1	0.895	1.170	38	2	1.037	430	1.060	0.911	0.948	0.947	1.033	1.037											
431	52	2	1.145	0.379	98	10	1.235	431	1.254	1.135	1.165	1.212	1.189	1.235											
433	15	-	0.855	0.707	19	-	0.887	433	0.989	0.886	0.933	0.927	0.969	0.887											
450	51	-	0.977	0.959	66	2	1.014	450	1.085	1.038	1.078	1.073	0.954	1.014											
451	43	2	1.045	0.612	76	2	1.112	451	1.191	1.191	1.146	1.119	1.122	1.112											
452	23	2	1.069	1.505	39	5	1.103	452	1.078	1.061	1.144	1.109	1.107	1.103											
462	15	1	1.047	0.482	38	1	1.105	462	1.001	0.923	0.988	0.939	1.062	1.105											
465	51	4	0.972	0.532	97	7	1.058	465	1.177	1.024	0.985	1.031	1.023	1.058											
481	41	2	1.058	0.781	77	6	1.170	481	1.174	1.053	1.083	1.152	1.070	1.170											
482	43	-	0.867	0.870	59	1	0.934	482	0.987	0.882	0.890	0.912	0.943	0.934											
483	62	2	0.864	0.869	93	4	0.892	483	0.929	0.911	0.903	0.894	0.926	0.892											
501	39	-	1.141	1.867	58	1	1.138	501	1.033	1.043	0.980	1.000	1.118	1.138											
502	45	2	1.003	0.849	68	3	1.052	502	0.973	0.943	0.998	0.971	1.075	1.052											
503	27	-	0.964	0.565	51	1	1.075	503	1.200	1.044	1.059	0.999	1.082	1.075											
508	76	-	0.999	0.830	117	2	1.025	508	1.043	1.067	1.066	1.034	1.023	1.025											
509	32	-	0.889	1.538	44	1	0.917	509	1.083	0.927	0.919	0.925	0.951	0.917											
510	69	1	0.850	3.057	121	6	0.872	510	1.012	0.917	0.917	0.865	0.812	0.872											
511	26	-	0.987	0.827	49	2	1.090	511	1.043	1.005	1.082	1.101	1.132	1.090											
513	110	2	0.956	0.692	170	5	1.034	513	1.070	1.030	1.050	0.970	1.014	1.034											
514	34	1	1.049	1.330	40	1	1.069	514	0.981	0.896	0.955	1.118	1.087	1.069											
517	32	2	1.020	0.398	110	19	1.146	517	1.252	1.154	1.143	1.099	1.123	1.146											
518	26	-	0.991	0.733	44	2	1.111	518	1.128	1.077	1.079	1.119	1.117	1.111											
519	63	2	0.966	0.682	100	8	1.046	519	1.144	1.034	1.087	1.068	1.078	1.046											
520	84	1	1.003	0.676	207	9	1.044	520	1.069	0.997	1.010	0.989	1.002	1.044											
521	48	-	0.970	1.513	119	10	1.115	521	1.258	1.130	1.125	1.064	1.050	1.115											
522	44	1	0.920	0.635	124	13	1.030	522	1.109	1.045	1.083	1.057	1.086	1.030											
523	33	1	0.978	0.571	113	17	1.107	523	1.319	1.247	1.152	1.138	1.172	1.107											
524	19	-	1.045	1.411	52	3	1.108	524	1.147	1.125	1.136	1.091	1.103	1.108											
529	47	-	0.982	0.830	80	4	1.073	529	1.071	0.993	1.066	1.012	1.065	1.073											
530	39	2	0.931	1.772	94	9	1.018	530	1.095	1.028	1.081	1.028	1.070	1.018											
532	91	4	1.011	0.985	148	7	1.098	532	1.133	1.039	1.010	1.058	1.053	1.098											
535	39	-	1.032	1.700	55	1	1.076	535	1.030	0.985	0.979	1.061	1.076	1.076											
536	22	-	1.170	0.425	57	3	1.259	536	1.224	1.077	1.196	1.220	1.261	1.259											
537	11	1	0.841	0.735	33	6	0.925	537	1.056	1.031	0.999	1.003	1.027	0.925											
538	66	1	0.947	0.686	110	3	0.999	538	1.111	0.970	1.028	0.962	0.945	0.999											
539	54	2	1.182	0.335	80	8	1.210	539	1.267	1.191	1.221	1.230	1.248	1.210											
540	49	-	0.871	0.781	101	5	1.049	540	1.137	1.044	1.075	1.060	1.091	1.049											
543	23	-	1.057	2.489	41	-	1.034	543	1.023	0.930	0.987	0.970	0.977	1.034											
545	75	-	1.043	1.507	128	1	1.074	545	1.038	0.954	1.006	1.008	1.015	1.074											
546	64	-	0.961	0.641	111	6	1.018	546	1.062	0.989	1.014	1.016	1.027	1.018											
547	48	2	0.950	0.643	78	6	1.008	547	0.996	0.927	0.913	0.915	0.982	1.008											
549	36	-	1.256	0.725	55	-	1.270	549	1.145	1.212	1.328	1.257	1.264	1.270											
550	79	3	0.931	1.218	95	5	0.970	550	1.030	1.016	1.006	1.006	1.006	0.970											
553	11	-	0.805	0.727	40	2	0.842	553	1.016	0.845	0.852	0.831	0.794	0.842											
554	30	1	0.824	0.960	49	2	0.876	554	1.013	0.866	0.880	0.875	0.851	0.876											
555	39	1	1.101	0.439	72	3	1.212	555	1.250	1.111	1.205	1.252	1.172	1.212											

WI 12/31/2011 Nursing Home Non-DD Residents								All-Res Non-DD 2011 Cost Report Period																	
Includes in-house and bedhold residents; excludes TBI and ventilator residents								Includes in-house and bedhold residents; excludes TBI and ventilator																	
16,324		410		0.974		0.945		29,046		1,639		1.038		1.102		1.018		1.030		1.036		1.036		1.038	
Medicaid FFS Non-DD Residents					All-Resident Non-DD Residents			All-Resident FFS Non-DD CMI																	
PopID	Count	RUG-48 NA	RUG-48 CMI	Beh/CI Score	Count	RUG-48 NA	RUG-48 CMI	PopID	Sep-10 RUG-34	Dec-10	Mar-11	Jun-11	Sep-11	Dec-11											
557	17	-	0.889	1.315	25	-	0.890	557	0.887	0.816	0.857	0.894	0.845	0.890											
558	28	2	1.007	0.846	117	7	1.117	558	1.170	1.104	1.135	1.181	1.115	1.117											
559	-	-			-	-		559	1.715	3.000															
560	60	1	0.996	1.422	84	1	1.036	560	1.131	1.010	1.088	1.136	1.095	1.036											
562	30	-	0.916	0.868	58	3	0.925	562	1.005	0.901	0.911	0.829	0.869	0.925											
564	56	1	0.658	2.155	66	1	0.651	564	0.861	0.654	0.637	0.611	0.622	0.651											
565	40	1	0.917	0.585	106	5	0.966	565	1.024	1.063	0.955	0.926	0.960	0.966											
567	60	-	1.017	0.853	143	6	1.068	567	1.040	0.980	1.057	1.003	1.070	1.068											
568	11	-	1.052	1.077	23	2	1.033	568	1.090	0.912	0.857	0.929	0.957	1.033											
570	22	1	1.292	0.255	46	5	1.349	570	1.342	1.278	1.286	1.325	1.267	1.349											
571	27	-	0.863	0.980	42	1	0.951	571	1.007	0.838	0.951	0.979	0.921	0.951											
572	57	3	0.990	0.769	79	4	1.027	572	1.061	0.999	1.021	1.034	1.018	1.027											
574	22	1	1.199	0.438	38	2	1.253	574	1.273	1.300	1.203	1.199	1.238	1.253											
575	57	1	0.987	1.184	101	3	1.052	575	1.031	1.015	1.078	1.044	1.040	1.052											
577	197	9	0.953	0.965	366	22	1.024	577	1.102	1.028	1.042	1.046	1.022	1.024											
578	63	3	0.998	1.108	119	9	1.042	578	1.144	1.089	1.069	1.105	1.089	1.042											
581	35	1	0.924	1.390	76	4	0.929	581	1.109	0.983	0.896	1.018	0.977	0.929											
582	22	1	0.904	1.229	47	5	0.888	582	0.949	0.903	0.900	0.890	0.881	0.888											
583	33	3	1.283	0.813	46	4	1.244	583	1.084	1.023	1.120	1.251	1.297	1.244											
585	21	-	0.840	0.990	82	15	0.990	585	1.210	0.922	0.949	0.979	1.023	0.990											
586	41	4	0.809	0.749	58	6	0.866	586	0.981	0.867	0.958	0.846	0.860	0.866											
588	13	1	0.970	0.981	56	4	1.207	588	1.324	1.231	1.155	1.180	1.172	1.207											
598	26	1	1.070	0.416	70	4	1.251	598	1.420	1.279	1.297	1.314	1.253	1.251											
600	47	-	0.979	0.754	86	3	1.071	600	1.170	1.035	1.118	1.070	1.091	1.071											
601	28	-	0.978	0.754	46	1	1.000	601	1.003	1.017	1.069	1.059	1.056	1.000											
606	46	1	0.936	1.063	74	2	0.984	606	0.953	0.884	0.956	0.993	0.975	0.984											
607	27	1	0.872	0.688	56	2	0.899	607	1.053	0.924	1.046	1.044	0.961	0.899											
608	52	-	0.957	0.704	85	3	1.018	608	1.090	1.011	1.028	1.007	0.976	1.018											
612	6	-	0.883	0.625	35	9	1.090	612	1.306	1.185	1.205	1.159	1.126	1.090											
613	12	1	0.666	2.786	16	2	0.656	613	0.897	0.742	0.682	0.703	0.673	0.656											
614	40	1	0.841	1.303	48	3	0.858	614	1.021	0.915	0.963	0.918	0.944	0.858											
661	34	2	0.997	0.923	69	3	1.087	661	1.116	0.989	0.967	0.967	0.999	1.087											
662	60	1	0.982	0.468	97	6	1.051	662	1.182	1.091	1.087	1.064	1.034	1.051											
663	20	-	1.006	0.848	84	6	1.022	663	1.146	1.001	1.019	0.999	0.965	1.022											
664	39	1	0.893	0.738	60	4	0.949	664	1.098	0.971	0.974	0.955	1.037	0.949											
665	39	1	0.990	0.418	91	7	1.012	665	1.092	0.976	0.992	1.027	0.998	1.012											
666	19	-	0.826	1.013	21	-	0.824	666	1.115	0.849	0.830	0.897	0.841	0.824											
668	70	-	0.940	0.809	104	2	0.967	668	0.969	1.003	0.929	0.976	0.957	0.967											
669	56	1	0.953	0.678	83	1	1.016	669	1.257	1.051	1.055	1.071	1.059	1.016											
670	12	2	0.857	1.210	18	3	0.831	670	1.017	0.941	0.959	0.920	0.819	0.831											
671	123	2	0.927	1.221	186	5	0.982	671	1.027	0.919	1.008	1.011	0.968	0.982											
673	41	-	1.043	0.615	66	6	1.131	673	1.114	1.053	1.021	1.005	1.058	1.131											
701	51	1	1.162	0.491	92	5	1.257	701	1.276	1.140	1.225	1.161	1.187	1.257											
703	76	1	0.985	1.535	101	2	1.049	703	1.000	0.922	0.980	1.025	1.068	1.049											
706	24	1	0.923	1.600	43	3	0.968	706	1.145	1.042	1.084	1.068	1.014	0.968											
707	48	-	1.183	0.619	58	-	1.199	707	1.056	1.072	1.084	1.113	1.163	1.199											
709	61	2	0.928	1.318	92	6	0.978	709	1.198	1.026	1.051	0.999	1.018	0.978											
710	17	-	1.129	0.824	43	2	1.142	710	1.142	1.127	1.195	1.215	1.225	1.142											
712	32	2	1.127	0.917	56	6	1.195	712	1.208	1.116	1.131	1.174	1.196	1.195											
714	43	3	1.115	1.338	78	5	1.132	714	1.327	1.080	0.997	1.055	1.090	1.132											
715	32	-	0.665	1.070	44	-	0.788	715	1.057	0.842	0.756	0.745	0.776	0.788											
716	36	1	0.863	0.581	54	2	0.929	716	0.968	0.843	0.924	0.946	0.894	0.929											
718	134	6	0.817	0.681	169	6	0.873	718	0.972	0.848	0.854	0.856	0.876	0.873											
719	39	2	0.889	1.612	60	4	0.931	719	0.981	0.907	0.892	0.926	0.895	0.931											
720	25	-	1.041	0.348	48	3	1.155	720	1.107	1.084	1.067	1.148	1.165	1.155											
721	43	1	0.897	1.114	56	1	0.895	721	1.002	0.968	0.976	1.005	0.926	0.895											
722	44	-	0.968	0.982	90	4	1.000	722	1.093	0.992	1.018	1.026	0.999	1.000											
723	80	4	1.070	1.006	127	8	1.109	723	1.117	1.076	1.085	1.091	1.112	1.109											
724	45	2	0.858	1.374	78	4	0.901	724	1.026	0.890	0.940	0.940	0.928	0.901											
726	26	-	1.080	1.592	35	2	1.053	726	1.054	1.025	1.040	1.049	1.029	1.053											
728	49	4	1.052	0.531	57	5	1.074	728	1.053	0.957	1.037	0.944	1.013	1.074											
729	75	-	0.916	0.523	113	5	0.975	729	1.038	1.033	0.979	0.985	1.002	0.975											
730	34	-	0.898	2.053	50	2	0.884	730	1.026	0.913	0.974	0.926	0.929	0.884											
731	30	1	1.012	1.566	91	9	1.162	731	1.161	1.027	1.093	1.115	1.110	1.162											
732	30	1	1.106	0.440	61	5	1.096	732	0.961	1.012	0.984	1.038	1.098	1.096											

WI 12/31/2011 Nursing Home Non-DD Residents								All-Res Non-DD 2011 Cost Report Period																	
Includes in-house and bedhold residents; excludes TBI and ventilator residents								Includes in-house and bedhold residents; excludes TBI and ventilator																	
16,324		410		0.974		0.945		29,046		1,639		1.038		1.102		1.018		1.030		1.036		1.036		1.038	
Medicaid FFS Non-DD Residents					All-Resident Non-DD Residents			All-Resident FFS Non-DD CMI																	
PopID	Count	RUG-48 NA	RUG-48 CMI	Beh/CI Score	Count	RUG-48 NA	RUG-48 CMI	PopID	Sep-10 RUG-34	Dec-10	Mar-11	Jun-11	Sep-11	Dec-11											
733	14	-	0.900	0.100	55	6	1.129	733	1.235	1.137	1.106	1.100	1.151	1.129											
735	31	-	0.941	0.852	45	1	0.928	735	1.042	0.895	0.921	1.126	0.942	0.928											
753	67	-	1.061	0.538	95	3	1.105	753	1.209	1.135	1.134	1.133	1.142	1.105											
754	42	2	1.088	0.691	63	6	1.076	754	1.070	0.933	0.997	1.001	1.025	1.076											
756	18	-	1.032	1.131	22	-	1.027	756	0.986	1.034	1.167	1.172	1.127	1.027											
757	28	1	1.033	1.011	54	6	1.085	757	1.142	1.101	1.149	1.078	1.070	1.085											
758	22	-	0.890	1.082	44	1	1.046	758	1.049	0.947	0.958	0.997	1.084	1.046											
759	22	-	0.795	0.848	39	1	0.952	759	0.969	1.024	0.963	0.996	0.996	0.952											
762	23	1	1.056	0.384	73	7	1.207	762	1.268	1.168	1.229	1.238	1.208	1.207											
763	88	1	0.850	1.252	142	3	0.946	763	1.046	0.929	0.942	0.988	0.949	0.946											
764	20	-	1.024	1.088	61	6	1.090	764	1.197	1.027	1.071	1.102	1.138	1.090											
765	35	-	1.017	1.664	56	-	1.116	765	1.058	1.112	1.124	1.050	1.064	1.116											
766	29	3	0.910	1.215	39	3	0.979	766	1.122	1.062	1.068	1.105	1.038	0.979											
767	37	2	0.868	0.644	65	4	1.006	767	1.153	0.991	1.044	0.993	1.021	1.006											
768	26	1	1.140	0.396	52	3	1.191	768	1.238	1.204	1.180	1.171	1.234	1.191											
770	38	2	0.943	1.000	55	5	1.017	770	1.068	0.933	0.948	1.007	1.038	1.017											
772	101	2	1.038	1.699	126	4	1.071	772	1.101	1.054	1.075	1.068	1.046	1.071											
774	90	-	0.950	0.815	149	7	1.052	774	1.033	0.992	1.025	0.998	1.045	1.052											
775	57	3	0.907	1.346	89	5	0.976	775	1.051	0.890	0.898	0.934	0.958	0.976											
776	72	1	0.925	1.654	114	4	0.952	776	0.923	0.881	0.893	0.899	0.899	0.952											
780	40	-	0.915	0.533	46	1	0.935	780	1.138	0.950	0.957	0.964	0.945	0.935											
784	34	-	1.178	0.303	100	4	1.206	784	1.208	1.130	1.131	1.181	1.183	1.206											
785	18	-	1.152	0.397	111	7	1.286	785	1.200	1.168	1.208	1.237	1.238	1.286											
786	10	-	0.748	1.430	20	-	0.824	786	1.071	0.895	0.773	0.849	0.779	0.824											
787	4	1	1.080	0.500	30	8	1.359	787	1.466	1.266	1.325	1.330	1.344	1.359											
801	52	3	1.184	0.547	103	7	1.276	801	1.214	1.065	1.171	1.254	1.225	1.276											
802	34	2	0.994	0.823	87	6	1.033	802	1.035	0.988	1.048	1.025	0.989	1.033											
803	79	2	0.955	1.332	126	3	0.969	803	1.020	0.985	0.980	0.977	0.967	0.969											
804	73	3	0.919	1.196	120	9	0.992	804	1.133	0.955	1.034	1.007	0.992	0.992											
806	27	1	1.008	1.158	43	1	1.010	806	1.051	1.115	1.034	0.970	0.970	1.010											
807	50	-	0.982	0.777	78	4	0.996	807	1.065	1.007	1.022	1.036	1.035	0.996											
809	4	-	0.998	0.250	23	1	1.006	809	1.023	1.019	1.006	1.117	1.177	1.006											
810	74	1	0.972	0.836	118	8	1.003	810	1.083	1.049	1.093	1.086	1.034	1.003											
811	56	2	0.816	2.094	82	3	0.881	811	1.060	0.940	0.932	0.873	0.913	0.881											
812	36	-	0.889	0.383	72	3	1.002	812	1.085	1.007	1.060	1.008	1.054	1.002											
813	33	1	0.994	0.669	61	5	1.146	813	1.180	1.059	1.068	1.082	1.083	1.146											
815	30	-	1.017	0.330	68	3	1.142	815	1.111	1.069	1.132	1.130	1.082	1.142											
817	37	1	0.899	0.686	69	4	0.947	817	1.095	0.966	0.941	0.956	0.984	0.947											
818	48	-	0.861	0.588	63	4	0.906	818	0.935	0.855	0.875	0.911	1.018	0.906											
820	33	-	0.989	0.723	108	10	1.012	820	1.089	1.015	1.005	1.003	1.005	1.012											
821	49	-	0.858	1.311	95	1	0.926	821	1.032	0.962	0.963	0.951	0.970	0.926											
822	22	-	0.673	0.705	29	-	0.676	822	0.646	0.583	0.640	0.732	0.670	0.676											
824	12	-	1.141	0.538	28	1	1.149	824	1.153	1.075	1.056	1.100	1.163	1.149											
826	19	-	0.782	1.147	37	1	0.854	826	1.021	0.949	0.914	0.966	0.940	0.854											
827	47	-	0.958	0.514	89	1	1.029	827	1.082	0.963	0.960	0.995	0.979	1.029											
828	32	-	0.899	0.425	41	2	0.934	828	0.987	0.940	1.074	1.045	0.912	0.934											
829	20	-	0.970	0.320	52	3	1.088	829	1.187	1.070	1.086	0.991	1.019	1.088											
832	38	-	0.965	0.555	59	1	1.017	832	1.053	0.996	0.929	1.043	1.011	1.017											
833	22	2	0.965	1.200	52	4	1.075	833	1.135	1.112	1.053	1.114	1.037	1.075											
834	41	1	0.964	1.410	61	4	1.004	834	1.153	1.094	1.071	1.048	1.067	1.004											
835	38	1	1.023	1.018	53	2	1.018	835	0.940	0.882	0.857	0.939	0.930	1.018											
837	35	-	0.923	0.630	96	3	0.992	837	1.054	0.965	0.997	0.947	1.005	0.992											
839	12	-	0.838	1.213	42	1	0.783	839	0.966	0.911	0.774	0.830	0.838	0.783											
840	15	-	1.029	0.400	71	2	1.066	840	1.063	1.088	1.200	1.136	1.124	1.066											
841	36	-	0.988	0.650	90	3	1.122	841	1.121	1.078	1.113	1.070	1.106	1.122											
842	25	1	0.940	0.744	68	6	0.978	842	1.140	1.015	1.032	1.028	1.021	0.978											
843	45	2	0.964	1.032	69	5	1.020	843	1.053	0.925	0.923	0.991	0.971	1.020											
845	42	1	0.928	1.030	84	5	1.037	845	1.175	1.019	1.110	1.050	1.091	1.037											
846	42	-	0.982	1.006	82	4	1.057	846	1.042	1.033	1.022	1.079	1.060	1.057											
849	19	-	0.921	0.821	25	-	0.925	849	0.974	0.941	0.960	0.958	0.904	0.925											
850	59	1	0.966	0.711	106	8	1.008	850	1.151	0.997	1.055	1.096	1.012	1.008											
853	20	-	0.852	1.040	37	2	0.898	853	1.055	0.962	0.851	0.903	0.893	0.898											
854	22	-	0.975	0.484	30	1	1.055	854	1.180	1.185	1.207	1.046	1.028	1.055											
855	12	-	0.705	1.033	15	1	0.719	855	0.987	0.871	0.838	0.969	0.805	0.719											
856	5	-	0.812	0.750	26	-	0.930	856	0.927	0.886	0.874	0.932	0.868	0.930											

WI 12/31/2011 Nursing Home Non-DD Residents								All-Res Non-DD 2011 Cost Report Period																			
Includes in-house and bedhold residents; excludes TBI and ventilator residents								Includes in-house and bedhold residents; excludes TBI and ventilator																			
16,324		410		0.974		0.945		29,046		1,639		1.038				1.102		1.018		1.030		1.036		1.036		1.038	
Medicaid FFS Non-DD Residents					All-Resident Non-DD Residents			All-Resident FFS Non-DD CMI																			
PopID	Count	RUG-48 NA	RUG-48 CMI	Beh/CI Score	Count	RUG-48 NA	RUG-48 CMI	PopID	Sep-10 RUG-34	Dec-10	Mar-11	Jun-11	Sep-11	Dec-11													
857	84	1	1.086	0.789	126	7	1.125	857	1.052	0.946	0.983	1.060	1.101	1.125													
858	30	-	1.227	0.287	92	8	1.307	858	1.336	1.264	1.312	1.309	1.335	1.307													
859	31	-	1.145	0.868	81	4	1.178	859	1.279	1.195	1.179	1.184	1.174	1.178													
860	93	-	0.843	1.083	124	3	0.935	860	1.036	0.947	0.991	0.963	0.959	0.935													
861	61	-	0.955	0.755	62	-	0.952	861	0.997	0.930	0.962	0.978	0.957	0.952													
862	37	-	1.059	0.461	73	3	1.103	862	0.977	0.953	1.019	1.046	1.023	1.103													
864	25	-	0.969	0.738	56	3	1.031	864	1.023	1.026	1.032	1.012	1.018	1.031													
865	27	-	0.876	0.776	44	-	0.937	865	1.004	1.150	1.046	0.931	0.925	0.937													
880	25	-	1.064	0.482	40	-	1.057	880	1.052	1.002	1.092	0.995	1.024	1.057													
881	37	-	0.850	0.896	53	1	0.900	881	1.024	0.870	0.882	0.869	0.873	0.900													
882	32	-	0.919	0.752	50	1	0.974	882	1.067	0.950	1.032	0.995	0.869	0.974													
884	28	1	1.044	5.923	33	1	1.025	884	1.048	1.039	1.100	1.039	1.055	1.025													
885	30	1	0.863	1.183	45	3	0.879	885	1.039	0.948	0.927	1.002	0.957	0.879													
886	19	-	1.016	0.797	56	2	1.112	886	0.959	0.894	0.931	0.967	1.099	1.112													
887	20	-	0.993	0.650	92	4	1.117	887	1.147	1.141	1.137	1.102	1.107	1.117													
888	69	2	0.849	1.241	94	2	0.885	888	1.032	0.882	0.910	0.944	0.854	0.885													
889	28	1	1.009	0.798	46	2	1.055	889	0.957	0.962	0.987	1.008	0.988	1.055													
890	-	-	-	-	-	-	-	890	1.577	-	-	-	-	-													
899	-	-	-	-	13	6	1.160	899	1.576	1.442	1.092	1.208	1.055	1.160													
901	38	-	0.886	0.812	47	-	0.928	901	0.980	0.922	0.908	0.935	0.911	0.928													
910	38	1	1.043	0.662	55	2	1.074	910	1.051	1.036	1.118	1.087	1.107	1.074													
913	45	2	0.954	0.935	83	6	1.025	913	1.099	0.994	0.993	1.024	1.038	1.025													
915	58	2	0.909	0.683	139	10	1.014	915	1.034	0.916	0.984	0.984	0.978	1.014													
916	28	1	1.130	0.831	50	2	1.093	916	1.132	1.062	1.101	1.133	1.043	1.093													
917	44	1	0.857	0.676	73	7	0.933	917	1.106	0.962	0.969	0.950	1.012	0.933													
918	46	1	0.916	0.504	86	4	0.945	918	1.048	1.054	1.077	1.013	0.976	0.945													
920	42	1	1.107	0.238	60	6	1.122	920	1.084	1.046	1.062	1.178	1.137	1.122													
921	52	1	0.959	0.662	106	8	1.057	921	1.157	1.020	0.967	0.969	1.032	1.057													
931	20	1	1.206	0.592	53	10	1.252	931	1.383	1.235	1.275	1.256	1.283	1.252													
932	66	2	1.055	0.602	116	11	1.112	932	1.192	1.068	1.072	1.098	1.109	1.112													
933	61	1	0.989	1.098	94	3	1.064	933	1.120	1.116	1.114	1.182	1.124	1.064													
934	24	-	0.880	1.413	90	6	0.973	934	1.148	0.984	0.996	1.027	0.984	0.973													
936	39	-	1.122	0.582	53	2	1.140	936	1.146	1.057	1.093	1.112	1.140	1.140													
937	18	-	0.974	1.100	40	-	1.093	937	1.130	0.990	1.046	1.072	1.164	1.093													
939	93	1	0.991	0.858	150	8	1.060	939	1.108	0.953	1.029	1.043	1.051	1.060													
942	26	1	1.244	2.544	39	1	1.286	942	1.224	1.109	1.108	1.247	1.198	1.286													
943	28	1	0.921	0.643	43	3	0.963	943	0.989	0.986	1.053	1.000	1.109	0.963													
944	31	1	1.069	0.348	48	1	1.142	944	1.288	1.186	1.173	1.225	1.208	1.142													
945	35	2	1.108	0.487	120	15	1.254	945	1.361	1.194	1.251	1.243	1.248	1.254													
946	27	1	1.264	0.165	47	3	1.270	946	1.320	1.334	1.258	1.305	1.335	1.270													
947	24	1	1.333	0.687	51	4	1.382	947	1.344	1.230	1.312	1.337	1.329	1.382													
948	6	-	0.833	-	17	3	1.056	948	1.450	1.173	1.175	1.221	1.196	1.056													
949	23	2	1.083	0.543	51	6	1.218	949	1.441	1.309	1.251	1.240	1.240	1.218													
951	128	4	1.011	1.591	158	4	1.025	951	1.032	0.946	0.969	0.999	1.003	1.025													
953	52	3	0.939	0.754	129	8	0.975	953	1.027	0.980	1.021	0.974	0.957	0.975													
954	33	1	1.178	0.534	75	8	1.201	954	1.185	1.178	1.241	1.214	1.190	1.201													
955	70	3	0.860	1.035	119	6	0.884	955	0.948	0.911	0.920	0.884	0.914	0.884													
956	564	32	0.760	1.239	695	36	0.775	956	0.893	0.730	0.741	0.759	0.763	0.775													
957	89	3	0.905	0.822	154	6	0.987	957	1.211	1.160	1.202	1.020	1.026	0.987													
958	62	-	0.946	0.577	138	11	1.033	958	1.045	0.959	0.953	1.001	0.997	1.033													
959	54	-	1.016	0.778	88	1	1.090	959	1.145	1.065	1.061	1.067	1.074	1.090													
965	31	-	0.740	1.002	41	-	0.818	965	0.936	0.885	0.834	0.824	0.772	0.818													
980	17	-	0.766	1.076	27	-	0.979	980	0.956	0.932	0.948	0.960	0.865	0.979													
982	151	1	0.950	1.032	237	9	1.076	982	1.045	0.986	0.988	1.027	1.049	1.076													