

ARJO

maxi 500

a NEW PaSSiVE mOBiLE LiFT



POWERED aSSiSTaNCE FOR CaREGiVER PROTECTiON...

From the busiest hospital to the smallest nursing home, caregivers are faced daily with the risk of crippling back pain and injury due to the manual moving and handling of residents. With the right mechanical aids in place, caregiver safety can be improved and injury-related costs reduced. Easy to understand, simple to operate and offering maximum resident comfort, ARJO patient lifts are firmly established as the most appropriate ergonomic choice for today's professional nurse and caregiver.



...an EFFICIENT SOLUTION FOR EVERYDAY PATIENT HANDLING

Maxi 500 combines proven lifting technology with the latest standards in safety, security and comfort for both resident and caregiver alike. Compatible with a full range of head and body support slings, the electrically-operated *Maxi 500* allows caregivers to give their undivided attention to the resident during patient handling routines.

Using *Maxi 500*, one caregiver can safely and comfortably perform a wide range of everyday patient transfer tasks. And importantly, the caregiver can also raise a person who has fallen to the floor without needing to sit the resident up first.

All power-assisted procedures can be closely controlled by the caregiver. With dual controls the caregiver can choose the most convenient solution for each task by using the handset or the mast control panel.

The adjustable chassis, operated from the handset, can be easily adjusted to allow optimum access for resident transfers involving large chairs, wheelchairs or toilets.

Maxi 500 is also available with a scale option, allowing the caregiver to quickly weigh the resident during a transfer. Efficiently integrating weighing into transfer procedures saves time, eliminates a transfer to a fixed scale and makes the routine easier for resident and caregiver.

Key features

- Spreader bar is available in 2-point loop configuration or ARJO 4-point DPS (Dynamic Positioning System) compatible with a wide range of ARJO slings
- Boom with low reach makes it easy to pick up a person from the floor
- Powered lifting protects caregiver by minimizing physical effort
- Ergonomically designed push/pull handles reduce caregiver strain
- New low-friction castors provide excellent maneuverability and effortless transportation
- Dual controls allow the caregiver to operate lift from the handset or mast control panel
- Soft start/stop circuitry increases resident comfort and security during procedures
- Optional electronic scale mounted on boom is convenient to use and maximizes lifting height



A single caregiver can safely raise a resident from the floor.



The electronic scale option saves the caregiver's valuable time.



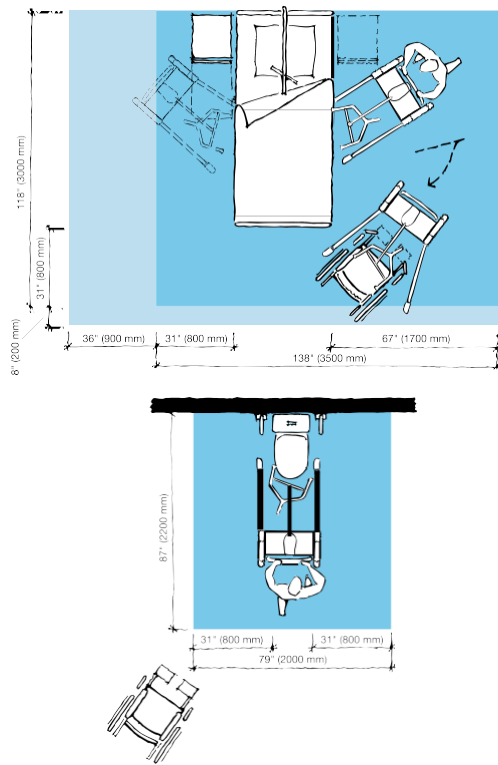
Chassis adjustment enables optimum lift positioning for toileting.



Operate efficiently via the handset or mast control panel. Ergonomically designed push/pull handles for smooth maneuvers.

PRODUCT SPECIFICATIONS

Space requirement



- Blue area shows the minimum working area required for the staff to be able to use the mechanical aids in an ergonomic way from one side.
- Light blue area shows required extension of working area to facilitate activities from either side to provide adequate access for the resident, mechanical aid and assisting caregiver.

Resident Gallery

Suitable for Doris and Emma



D Doris, who has no capacity to support herself

E Emma, who is almost completely bedridden and totally dependant

Please contact ARJO for further information on the Resident Gallery™.

Product information

Max. safe working load	500 lbs (227 kg)
Total weight	116 ½ lbs (53 kg)
Total lift height	52 ½" (1334 mm)
Lifting height	25-72" (660-1830 mm)
Height of chassis	4 ¾" (110 mm)
External width legs closed	25" (635 mm)
Internal width legs open	35 ¾" (910 mm)

Low friction castors, the rear two with brakes

Battery 24V 4Ah

Two batteries and a charger are supplied with each Maxi 500

Protection class Handset IP67
Lifter IPX4

Emergency stop and system failure override

approvals

The product is in compliance with current legislation and applicable product standards.

Options



THE ELECTRONIC SCALE:

- Integrates weighing into transfer procedures
- Eliminates extra transfer to fixed scale
- Saves caregiver's time and reduces manual handling
- Makes weighing more comfortable for patients

Use only ARJO Designed Parts, i.e. parts specifically designed for the purpose, on equipment and products supplied by ARJO. Our Conditions of Sale specify that ARJO is not liable for injuries attributable to the use of inadequate parts. Continuous development is part of our policy, and we therefore reserve the right to change specifications without notice.

ARJO, Maxi 500 and Resident Gallery are trademarks belonging to the ARJO group.



...with people in mind.

aRJO, inc.

50 N. Gary Avenue
Roselle, Illinois 60172
Phone: 800-323-1245
Fax: 888-594-2756
www.arjo.com

ARJOHUNTLEIGH

GETINGE GROUP

SARA 3000

THE ORIGINAL STANDING
AND RAISING AID



...with people in mind

CONTINUES THE SARA TRADITION
OF RAISING STANDARDS...



...AND RENEWS IT FOR THE FUTURE



Residents in care environments gain important physical and psychological benefits when their mobility is maintained. Choosing the right mechanical aid for a resident is crucial for maintaining mobility.

SARA 3000 is the perfect choice for transferring residents like Carl (see ArjoHuntleigh Mobility Gallery on back page). This standing and raising aid is designed specifically to provide optimum activation for wheelchair users with some capacity to support themselves.

SARA 3000 has been ergonomically designed with both the carer's and resident's needs in mind. And, with the new option of an integrated scale, *SARA 3000* is transformed into a standing, raising and weighing aid – enabling the resident to be weighed easily during a transfer.

Improving the resident's quality of life

Every aspect of *SARA 3000* – from the choice of detachable slings to large handles for an easy grip – has been designed to provide a safe, comfortable environment for resident transfers. With the support of the kneepad and footplate, the resident always feels secure. *SARA 3000* can also be used for beneficial standing exercises. It helps to improve the quality of life for residents by building a simple way to maintain mobility into regular handling routines.

Enhancing the carer's working environment

SARA 3000 makes carers' work easier. It enables safe transfers to be carried out by a single carer, because it completely eliminates manual lifting. The machine raises the resident to a standing position while providing optimum upper body support. Ergonomic design makes *SARA 3000* simple and comfortable to operate and control. Easy operation via the handset or mast panel supports safe, efficient transfers, which means the carer can devote more attention to encouraging the resident's active participation in the transfer routine.



Using *SARA 3000*, a single carer can raise the resident into a standing position, comfortably and securely.



Transfer to a wheelchair is performed smoothly and under close control.



The footplate provides optimum safety and stability, while the kneepad allows natural flexion of the ankle.



The optional integrated scale saves time by weighing the resident during a transfer.



Dual controls. Handset or mast panel control? The carer can choose the most suitable for the situation.



The powered chassis opens to provide optimum access for transfers. A wheel-lock mechanism secures the machine during raising and standing routines.



Key features

- Supports ergonomic working routines.
- Anatomical design for resident comfort.
- Safe working load 200 kg (440 lb).
- Weighing capacity 190 kg (418 lb).
- A variety of slings made of non-slip material, available in 5 sizes.
- Dual controls for easy operation.
- Active kneepad with individual leg support.
- Footplate ensures stability and safety.
- Powered adjustable chassis improves access for transfers.
- Integrated scale option.

Resident benefits

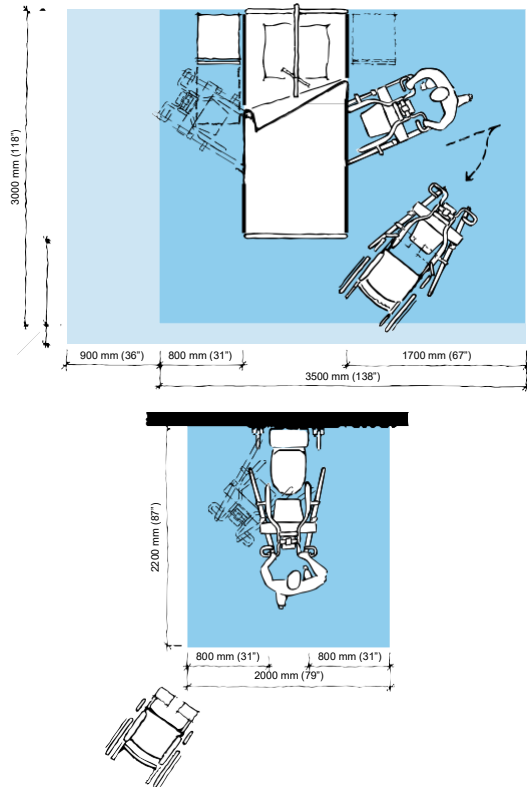
- Mobility is activated during everyday transfers.
- Mobility-maintaining standing exercises.
- Confidence in a safe, comfortable and stable system.
- Optimum support for transfers from bed, chair or wheelchair.
- Excellent aid for more dignified toileting routines.
- Good, reassuring eye-contact with the carer.

Carer benefits

- An easy-to-manoeuvre machine means reduced strain.
- A single carer can perform a transfer or standing exercise.
- Good access for adjusting the resident's clothing.
- Handset control means you always work close to the resident.
- Dual controls offers alternative or back-up to handset.

PRODUCT SPECIFICATIONS

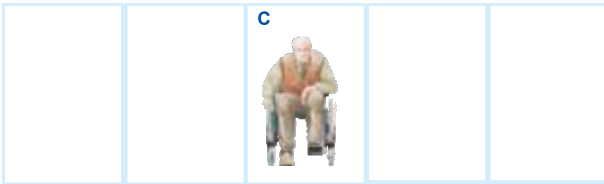
Space requirement



- Blue area shows the minimum working area required for the staff to be able to use the mechanical aids in an ergonomic way from one side.
- Light blue area shows required extension of working area to facilitate activities from either side to provide adequate access for the resident, mechanical aid and assisting carer.

Mobility Gallery

Suitable for Carl



C Carl, who sits in a wheelchair and has little capacity to support himself
Please contact ArjoHuntleigh for further information on the Mobility Gallery™.

Product information

Max. safe working load	200 kg / 440 lbs
Weighing capacity	190 kg / 418 lbs
Weight	62 kg / 137 lbs
Weight with Scale	72 kg / 158 lbs
Total length	1040 mm / 41"
Min. lifting height	912 mm / 36"
Max. lifting height	1715 mm / 67 1/2"
Total height	1140 mm / 44 3/4"
Height of chassis	110 mm / 4 1/4"
External width legs closed	630 mm / 24 3/4"
Internal width legs open	895 mm / 35 1/4"
Low friction castors, the rear two with brakes	
Battery	24V 4Ah
Two (2) batteries and one (1) charger are supplied with each Sara 3000	
Lifter – Protection class	IPX4
Battery Discharge Indicator (BDI) – Displays remaining power and indicates when the battery needs charging	
Service meter – Displays the total motor usage time	

Emergency stop and system failure override

Option

Integrated scale

Approvals

The product are in compliance with current legislation and applicable product standards

Only ArjoHuntleigh designed parts, which are designed specifically for the purpose, should be used on the equipment and products supplied by ArjoHuntleigh.
As our policy is one of continuous development we reserve the right to modify designs and specifications without prior notice.

© and ™ are trademarks belonging to the ArjoHuntleigh group of companies.
© ArjoHuntleigh, 2016

**ARJO
HUN
TLE**

IGH
GETINGE GROUP

www.ArjoHuntleigh.com

SE-211 20 Malmö SWEDEN
Phone: +46 (0) 10 335 45 00

ArjoHuntleigh AB
Hans Michelsensgatan 10

GETINGE

GROUP is a leading global provider of products and systems that

contribute to quality enhancement and cost efficiency within healthcare and life sciences. We operate under the three brands of **ArjoHuntleigh**, **GETINGE** and **MAQUET**. **ArjoHuntleigh** focuses on patient mobility and wound management solutions. **GETINGE** provides solutions for infection control within healthcare and contamination prevention within life sciences. **MAQUET** specializes in solutions, therapies and products for surgical interventions and intensive care.

200 mm (8")

800 mm (31")

Invacare® Reliant™ 450 Lift

Invacare® Reliant™ Lifts were conceived to help reduce the possibility of caregiver back injury and to ensure dignity in patient handling. These high-quality lifts are comfortable, reliable and integral tools for staff and caregivers. Using the lift for patient handling can help reduce staff injuries, save you money and reinforce safety as a priority in your health care facility.

Features

- Removable battery easily charges overnight on wall-mounted charging station
- Equipped with a quiet, long-life motor
- Wide lift range for easier transfer
- Wide base for maximum stability
- 4.5" Under bed clearance
- Limited warranty includes three years on lift, one year on battery
- 450 lb. weight capacity



Specifications

Model No:	RPL450-1	RPL450-2
Height		
Maximum at sling hook-up	74"	74"
Minimum at sling hook-up	24"	24"
Base height (clearance)	4.5"	4.5"
Base width		
Open	41"	41"
Closed	26.5"	26.5"
Base length	48"	48"
Casters		
Front	3"	3"
Rear	5"	5"
Product weight	106 lb.	109 lb.
Weight capacity	450 lb.	450 lb.
Removable battery pack		
One 24 rechargeable sealed	X	
Charger output 24-volt DC	X	X
Audible "low battery" alarm	X	X
Lifts per charge*	150-300	150-300

*Varies with lift range and load



Additional Product Suggestions



Invacare® Tracer® IV Wheelchair, page 8



Invacare® Bariatric Crutches, page 51



Invacare® Bariatric Shower Chair, page 44

roze™ sit-to-stand lift – 450 lb. capacity

powered base widening provides smoother resident transfers



healthcare equipment lifts



1-800-634-7328

directsupply.net

roze™ sit-to-stand lift – 450 lb. capacity



Lift Range:	25"
Maximum Height at Sling Hookup:	63½"
Minimum Height at Sling Hookup:	38½"
Base Leg Clearance:	4½"
Base Width:	Open: 43"; Closed: 25½"
Base Length:	40½"
Warranty:	3 years on lift, 2 years on actuator



benefits

- **Resident Safety**
 - Lift stops if obstruction sensed to prevent entrapment
 - Non-slip footplate for added safety
 - Emergency up and down controls featured within the control box
- **Resident Comfort**
 - Vertically adjustable kneepad to suit diverse resident population
- **Caregiver Safety**
 - **powered base widening reduces strain**
 - **lightweight aluminum and steel design allows for easy maneuvering**
 - Ergonomic push handle
- **Unique Features**
 - Compact footprint allows lift to fit in tight spaces such as bathrooms
 - Removable footplate allows lift to be used for gait training
 - **durable hand pendant has rubber material on hook, attaching it to lift**
- **Power Source**
 - Comes standard with 2 batteries and a charging station
 - Features visual and audible low battery indicators

roze sit-to-stand lifts

#21245 Roze Premier Sit-to-Stand Lift

1-800-634-7328

DIRECT
SUPPLY
YOUR ELDERCARE EQUIPMENT EXPERTS®

directsupply.net

DSS2453NAF



EZ Way, Inc.

EZ Way Smart Lift®

EZ Way Smart Lift®

Features and Specifications - 500# and 600# Capacities

Modular Design:

- All major components are easily replaced

Frame:

- Compact design; 47" long x 53" tall x 24" wide for 500# and 26" for 600#
- All steel construction
- Ergonomically positioned handle bar
- Ergonomically positioned battery pack receiver
- Three position leg spreader (hand operated)
- Low profile leg height (4-3/4" for 3" casters, 6 7/8" for 5" casters and 3-1/2" for 2" front casters)
- Optional low base with 2-1/16" clearance
- Large self-lubricating pivot bushings
- Baked epoxy powder coated paint
- Grade 5 or 8 fasteners, self-locking or loc-tited
- Weight with battery pack – 123 pounds
- Lift range 42.5" total travel

Covers and Bumpers:

- Rubber bumpers on front casters (3" only)
- Replaceable ABS plastic leg covers
- Replaceable ABS plastic base cover
- Replaceable ABS plastic bed guard
- Replaceable ABS plastic scale cover
- Rubber boom end cap
- Rubber caps on thumb switches, spreader bar and sling hangers

Casters:

- Front; double steel ball bearing with swivel head (3" diameter wheels)
- Rear; steel ball bearing with locking swivel head and wheel (3" diameter wheels)

Form #2-189 (Rev. 3-1-12)



EZ Way, Inc.

EZ Way Smart Lift®

*EZWay Smart Lift® – Features and Specifications – 500# and 600# Capacities
Cont. - Page 2*

Hand Control:

- Impact resistant
- Built in magnet
- Pneumatic (no electrical parts)

Motor Actuator:

- Acme screw design
- Very low current draw
- Built in safety switch for down stroke
- Automatically stops at top and bottom of stroke
- CE certified
- Manual lowering capability if there is a power failure

Battery Pack (2 per Stand):

- ABS plastic housing with handle
- 2 - 12 volt batteries/5.0 Amp hr = 24 volt output
- Approximately 180 lifts per charge
- Easily removed for charging

Battery Charger Unit:

- Independent of Stand
- 110 volt input/24 volt output
- Built in safety fuse
- Approved to UL Standards
- 6 to 8 hour charge



*EZWaySmartLift® – Features and Specifications – 500# and 600# Capacities
Cont. - Page 3*

Electronics:

- ABS Plastic shroud
- All functions controlled by a microprocessor
- Thumb switches (up and down functions)
- Front panel switches
 - a) Up/down
 - b) On (Off)
 - c) Zero, weight and lb/kg functions (if applicable)
- Large LCD window (13/16" high x 4-5/8" long x 1/2" high character displays)
 - a) Battery voltage level
 - b) Emergency power off
 - c) When to change battery (charge or swap)
 - d) Displays in pounds or kilograms (if applicable)
 - Automatically shuts off after 20 minutes of non-use
 - When battery level reaches swap mode, the stand can lower the patient one time
 - Conveniently located emergency stop switch
- Backlit LCD screen: During operation, EZ Way's LCD screen is illuminated for ease in viewing lift readout information.
- Usage time captured: Lift usage time is captured in minutes, great for tracking frequency of use.
- Overload protection: Should the actuator be overloaded due to lifting excess weight, lifting against an obstruction, or mechanical failure, "Actuator Overload" will appear on the LCD screen, the stand will cease lifting, and will only lower. A great feature to protect both patients and the lift.
- Weight Overload: Available in units with a scale, this feature will display "Weight Overload" on the LCD screen and will only allow the stand arms to lower.
- Weight recall: On units with scale, the last weight taken is retained until a new weight is taken, allowing caregivers easy reference in busy working environments.



EZ Way, Inc.

EZ Way Smart Lift®

*EZWaySmartLift® – Features and Specifications – 500# and 600# Capacities
Cont. - Page 4*

Additional Features:

- Free medium deluxe sling
- Free sling bag
- 10-year warranty on frame, 3 years on components
- Video training DVD
- Multiple accessory options
- Free initial inservice
- Free 90-day re-inservice
- Optional 5”, 4” all around or 2” front only casters
- Scale (optional)
 - a) Weighing accuracy of plus or minus 1%
 - b) Automatically subtracts harness weight (1.5 pounds)
 - c) No extra batteries needed
 - d) Automatically locks in patient’s weight (when * asterisk appears)
 - e) Displays in pounds or kilograms
 - f) Large digital display



EZ Way, Inc.

EZ Way Smart™ Stand

EZ Way Smart™ Stand

Features and Specifications – 400# and 500# Capacities

Modular Design:

- All major components are easily replaced

Frame:

- Compact design; 41” long x 49” tall (for without scale, 52” with scale) x 24” wide for 400# and 26” for 500#
- All steel construction
- Ergonomically positioned handle bar
- Ergonomically positioned battery pack receiver
- Three position leg spreader (hand operated)
- Low profile leg height (4 ¾” for 3” casters, 6 7/8” for 5” casters and 3 ½” for 2” front casters)
- Optional low base with 2 1/16” clearance
- Large self-lubricating pivot bushings
- Baked epoxy powder coated paint
- Grade 5 or 8 fasteners, self-locking or loc-tited
- Weight with battery pack – 132 pounds (without scale)
- Weight with battery pack – 184 pounds (with scale)

Covers and Bumpers:

- Rubber bumpers on front casters
- Replaceable ABS plastic leg covers
- Replaceable ABS plastic base cover
- Replaceable ABS plastic loadcell and flexure plate covers (scale models only)
- Totally padded vinyl covered lifting arms
- Vinyl head pad
- Rubber caps on thumb switches
- Non-skid strips on foot platform
- Rubber covers on hand grips

Casters:

- Front; double steel ball bearing with swivel head
- Rear; steel ball bearing with locking swivel head and wheel

Form #2-188 (Rev. 8-30-10)



EZ Way, Inc.

EZ Way Smart™ Stand

*EZ Way Smart™ Stand – Features and Specifications – 400# and 500#
Capacity Cont. - Page 2*

Hand Control:

- Impact resistant
- Built in magnet
- Pneumatic (no electrical parts)

Motor Actuator:

- Acme screw design
- Very low current draw
- Built in safety switch for down stroke
- Automatically stops at top and bottom of stroke
- CE certified
- Manual lowering capability if there is a power failure

Battery Pack: (2 per Stand)

- ABS plastic housing with handle
- 2 - 12 volt batteries/5.0 Amp hr = 24 volt output
- Approximately 180 lifts per charge
- Easily removed for charging

Battery Charger Unit:

- Independent of Stand
- 110 volt input/24 volt output
- Built in safety fuse
- Approved to UL Standards
- 6 to 8 hour charge



*EZ Way Smart™ Stand – Features and Specifications – 400# and 500#
Capacity Cont. - Page 3*

Electronics:

- ABS Plastic shroud
- All functions controlled by a microprocessor
- Thumb switches (up and down functions)
- Front panel switches
 - a) Up/down
 - b) On (Off)
 - c) Zero, weight and lb/kg functions (if applicable)
- Large LCD window (13/16” high x 4 5/8” long x 1/2” high character displays)
 - a) Battery voltage level
 - b) Emergency power off
 - c) When to change battery (charge or swap)
 - d) Displays in pounds or kilograms (if applicable)
 - Automatically shuts off after 20 minutes of non-use
 - When battery level reaches swap mode, the stand can lower the patient one time
 - Conveniently located emergency stop switch
- Backlit LCD screen: During operation, EZ Way’s LCD screen is illuminated for ease in viewing lift readout information.
- Usage time captured: Lift usage time is captured in minutes, great for tracking frequency of use.
- Overload protection: Should the actuator be overloaded due to lifting excess weight, lifting against an obstruction, or mechanical failure, “Actuator Overload” will appear on the LCD screen, the stand will cease lifting, and will only lower. A great feature to protect both patients and the lift.
- Weight Overload: Available in units with a scale, this feature will display “Weight Overload” on the LCD screen and will only allow the stand arms to lower.
- Weight recall: On units with scale, the last weight taken is retained until a new weight is taken, allowing caregivers easy reference in busy working environments.



EZ Way, Inc.

EZ Way Smart™ Stand

*EZ Way Smart™ Stand – Features and Specifications – 400# and 500#
Capacity Cont. - Page 4*

Additional Features:

- Free medium harness
- Free sling bag
- 10-year warranty on frame, 3 years on components
- Video training tape
- Multiple accessory options
- Three position removable lightweight foot platform
- Safety tabs for harness
- Free initial inservice
- Free 90-day re-inservice
- Optional 5", 4" all around or 2" front only casters
- Shin Pad
 - a) Two way adjustable (height & depth)
 - b) Safety strap
 - c) One position pivoting
- Scale (optional)
 - a) Weighing accuracy of plus or minus 1%
 - b) Automatically subtracts harness weight (1.5 pounds)
 - c) No extra batteries needed
 - d) Automatically locks in patient's weight (when * asterisk appears)
 - e) Displays in pounds or kilograms
 - f) Large digital display



redefining patient handling

Hoyer® Classics Product Overview

For more than 50 years, Hoyer lifters have defined the lifter category. From Ted Hoyer's early designs in the 1950's to more efficient models built with modern designs and materials, the Hoyer name has always stood for innovation. Hoyer's full line of truly functional and versatile lifts offers outstanding performance and style beyond compare!



HPL600WB/HPL600WBS

- Power operated base
- Base clearance of 4.5"
- 4-point cradle design minimizes patient discomfort
- Long, padded handles offer various grip choices
- Floor pick-up capability
- Emergency stop, power manual lowering
- 600 lb. patient capacity



HPL402

- Adjustable U-base
- Reverse-mounted actuator for additional knee clearance
- 6-point non-sway cradle offers maximum sling options
- Built-in emergency stop button
- Manual release for emergency lowering
- Lift leg guards and caster bumpers
- 400 lb. patient capacity



P-C-HLA-2

- Powered lifting provides more focus on the patient being lifted
- Adjustable U-base with 5.5" clearance
- 6-point cradle works with an array of Hoyer slings
- Easy cleaning, durable chrome finish
- 400 lb. patient capacity

You must use Hoyer® slings with Hoyer lifts.



C-HLA-2

- Floor pick-up capability
- Adjustable legs
- Cradle design minimizes sway
- 6-point non-sway cradle offers maximum sling options
- Durable chrome finish maintains appearance
- Mast and base separate for easy travel or storage
- Standard 4" casters
- 400 lb. patient capacity

Hoyer® Classics Slings



One Piece Commode Sling with Positioning Strap

- Durable, polyester with closed-cell foam padding for comfort
- Aperture for toileting without removing sling
- Easy patient position adjustment
- Size range from S-L
- Weight Capacity: 600 lbs.



One Piece Sling with Positioning Strap

- Durable, polyester with closed-cell foam padding for comfort
- Provides easy position adjustment of patient
- Size range from S-L
- Weight Capacity: 600 lbs.



U-Sling, Padded with Head Support

- Durable, polyester with closed-cell foam padding for comfort
- Nylon head support
- Full range of sizes from S-XL
- Weight Capacity: 600 lbs.



U-Sling, Padded

- Durable, polyester with closed-cell foam padding for comfort
- Full range of sizes from S-XL
- Weight Capacity: 600 lbs.

You must use Hoyer® slings with Hoyer lifts.

Hoyer Classic Lifts	
HPL600WB/HPL600WBSC 600 lb. patient capacity	Power operated base, Base clearance of 4.5", 4-point cradle design minimizes patient sway
HPL402 400 lb. patient capacity	Adjustable U-base, Reverse-mounted actuator for additional knee clearance, 6-point cradle works with an array of Hoyer slings
P-C-HLA-2 400 lb. patient capacity	Adjustable U-base with 5.5" clearance, 6-point cradle works with an array of Hoyer slings
C-HLA-2 400 lb. patient capacity	Adjustable legs, Cradle design minimizes sway, 6-point non-sway cradle offers extra stability

Hoyer Classic Slings	X-Large	Large	Medium	Small
One Piece Commode Sling with Positioning Strap	—	70056	70057	70058
One Piece Sling with Positioning Strap	—	70051	70052	70053
U-Sling, Padded with Head Support	70010	70011	70012	70013
U-Sling, Padded	70000	70001	70002	70003

**For product and pricing questions,
call our customer care team today!**

Post Acute
(Nursing Homes,
LTACs, Assisted Living)
800.826.0270

Acute
(Hospitals and
Distribution Partners)
888.221.8461

Government
(VA and GSA)
800.966.6662

Hoyer® Journey

Our new Journey lift is an ultra compact, portable folding standaid with best-in-class functionality. It is compact and lightweight allowing caregivers to maneuver in tight spaces while folding for easy storage or transportation. The first on the market adjustable cow-horn mechanism supports a range of patient heights and sizes, allowing your facility to have one lift that meets the needs of many. Our careful attention to product design with the Journey ensures that both the caregiver's and the resident's needs have been met.



Unique Folding Design

The Journey's unique folding design stands unaided for easy storage. The compact design also provides an ideal size for transporting. It is the only standaid on the market that folds.



Adjustable Cow-Horn

The unique adjustable cow-horn mechanism supports a range of resident heights and sizes. It is also ideal for transfers from low chairs.



Adjustable Kneepad

The sculpted knee pad is easily adjusted for ultimate patient comfort. Adjustable with one hand.



Newly Designed Bump Guard

Our newly designed bump guard provides additional protection against base plates and paint finishes in your facility.

Specification	Imperial	Metric
Safe Working Load	341 lbs	155 kgs
Maximum Overall Length.....	39.4"	1000 mm
Minimum Overall Length.....	36.8"	935 mm
Maximum Overall Height	63.0"	1600 mm
Minimum Overall Height	44.5"	1130 mm
Maximum Height to Attachment Point	60.2"	1530 mm
Minimum Height to Attachment Point	28.4"	720 mm
Turning Radius	45.1"	1145 mm
Legs Open - External Width	38.2"	970 mm
Legs Open - Internal Width.....	34.5"	875 mm
Legs Closed - External Width	27.0"	685 mm
Legs Closed - Internal Width	22.2"	590 mm
Widest Point (between support handles).....	18.8"	475 mm
Overall Height of Legs.....	4.3"	110 mm
Ground Clearance	1.2"	30 mm
Front Twin Casters	3.0"	75 mm
Rear Braked Casters.....	4.0"	100 mm

Weights	Imperial	Metric
Mast, Base & Boom Assembly	82.4 lbs	37.4 kg
Power Pack	6.2 lbs	2.8 kg
Total.....	88.6 lbs	40.2 kg
Base Assembly (not incl. battery)	30.2 lbs	13.7 kg
Mast & Boom (not incl. battery)	42.3 lbs	19.2 kg
Foot Tray	9.9 lbs	4.5 kg

Electric Shock Protection

Charger – Class II
Lift – Internal power source

Degree of Shock Protection

Charger – Type B
Lift – Type B
Intended operating environment: >+5°C <+40°C
Outside this environment functionality and safety may be compromised

Electrical Specifications

Battery – 24vDC rechargeable sealed lead acid type
Battery capacity – 3.2Ampere hours
Charger rated input – 100-240V AC 24 VDC 50/60Hz
Charger rated output – 29.5 VDC, Max. 19 W

