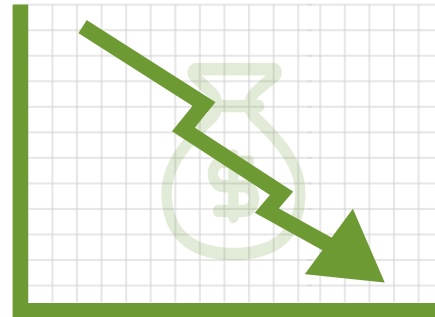
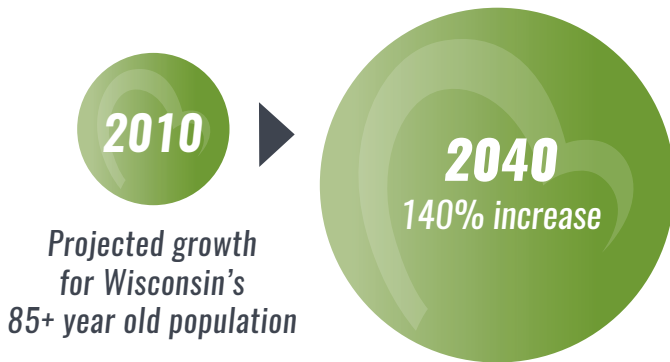


How Medicaid Underfunding Impacts Your Communities and the Prospect of Long-Term Care Services in the Future

The Challenge of Long-Term Care Funding in Wisconsin

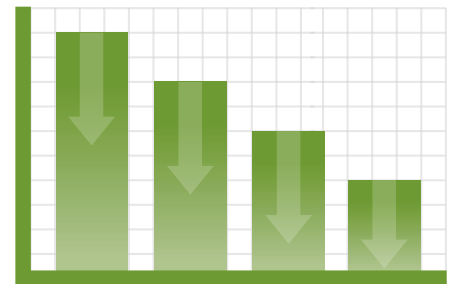


Future retirees are **saving less**, meaning more will **depend on Medicaid**



Percentage of caregiver jobs that remain unfilled

Fewer and fewer Certified Nursing Assistants remain registered each year

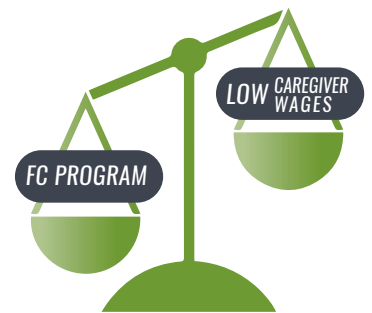


\$MCO\$

Capitation rates are **not passed on to providers**, instead, **inadequate rates are**



Current Family Care funding is being subsidized by **lower caregiver wages**



One of the **worst reimbursement systems in the nation**

39

Number of **Nursing Homes** that have **closed since 2016**





Thank You

for continuing to work with long-term care providers to enact public policies that increase reimbursement rates and funding that supports quality care and living wages for direct caregivers.

A statewide membership association comprised of 195 mission-driven organizations which own, operate and/or sponsor more than 500 nursing homes, facilities for the intellectually and developmentally disabled, assisted living communities, senior housing complexes, and community service agencies. Members employ over 38,000 individuals who provide daily care and service to more than 48,000 residents, tenants, or clients.

For more information please contact:

John Sauer

President/CEO

jsauer@LeadingAgeWI.org

Annette Cruz

Vice President of Public Policy & Advocacy

acruz@LeadingAgeWI.org

Robin Wolzenburg, RN

Director of Housing & Clinical Services

rwolzenburg@LeadingAgeWI.org

Brent Rapos, CPA

Vice President of Financial & Regulatory Services

brapos@LeadingAgeWI.org